

Explore More Along the Kosei Line!

Hop on a **Rental Bike** at the station and start your adventure!

Nagahama City Inside Omi-Shiotsu Sta.

Kohoku Area
One-Way Rental
Available

Omi-Shiotsu Sta. Community House

JR Omi-Shiotsu Station, 245 Yo, Nishiazai-cho, Nagahama City, Shiga Pref.

0749-88-0989
7:30 AM - 4:30 PM (Closed New Year's).

Nearby Attractions
Shiotsu Park, etc.

Takashima City Inside Omi-Imazu Sta.

Takashima City
One-Way Rental
Available

JR Omi-Imazu Sta. Tourist Information Center

JR Omi-Imazu Station, 1-9 Nakoji, Imazu-cho, Takashima City, Shiga Pref.

0740-22-4201
9:00 AM - 1:00 PM (Closed year-end/New Year's).

Nearby Attractions
Imazu Port, Hill with a View of Lake Biwa, etc.

Takashima City Inside Omi-Takashima Sta.

Takashima City
One-Way Rental
Available

Omi-Takashima Station Tourist Info

JR Omi-Takashima Station, 2245-5 Daimon, Katsuno, Takashima City, Shiga Pref.

0740-36-1314
9:00 AM - 2:00 PM (Closed year-end/New Year's).

Nearby Attractions
Takashima Village, Otomegaike Pond, Shirahige Shrine, etc.

Nagahama City Inside Nagahara Sta.

Kohoku Area
One-Way Rental
Available

Nagahara Sta. Community House

JR Nagahara Station, 1098-4 Oura, Nishiazai-cho, Nagahama City, Shiga Pref.

0749-89-0281
7:30 AM - 10:30 AM, 12:00 PM - 4:30 PM (Closed New Year's).

Nearby Attractions
Scenic lakeside views of Lake Biwa, etc.

Takashima City Shin-asahi Sta. (1-min walk)

Takashima City
One-Way Rental
Available

Biwako Takashima Tourism Assn

Takashima City Tourist Info Plaza, 1-10-1 Asahi, Shin-Asahi-cho, Takashima City, Shiga Pref.

0740-33-7101
9:00 AM - 5:00 PM (Closed year-end/New Year's).

Nearby Attractions
Harie village, etc.

Otsu City Hieizan-Sakamoto Sta. (10-min walk)

Sakamoto Tourism Assn

In front of Keihan Sakamoto-Hiezanguchi Station, 6-1-13 Sakamoto, Otsu City, Shiga Pref.

077-578-6565
9:30 AM - 4:30 PM (Closed year-end/New Year's).

Nearby Attractions
Hiyoshi Taisha Shrine, Sakamoto townscape, Sakamoto Cable (Mt. Hiei), etc.

Takashima City Inside Makino Sta.

Takashima City
One-Way Rental
Available

Makino Station Tourist Info

JR Makino Station, 1209-8 Nishihama, Makino-cho, Takashima City, Shiga Pref.

0740-28-1188
9:00 AM - 5:00 PM (Closed year-end/New Year's).

Nearby Attractions
Metasequoia trees, Makino Sunny Beach, Kaizu-Osaki, etc.

Takashima City Inside Adogawa Sta.

Takashima City
One-Way Rental
Available

Adogawa Station Tourist Info

JR Adogawa Station, 601-2 Nishiyurugi, Adogawa-cho, Takashima City, Shiga Pref.

0740-32-2464
9:00 AM - 1:00 PM (Closed year-end/New Year's).

Nearby Attractions
Biwako Children's Land, etc.

For one-way rentals, return bikes at designated locations. Contact each rental shop for details.

Check the Plus Cycle website for Shiga's rental bike info.
<https://pluscycle.shiga.jp/rental/>



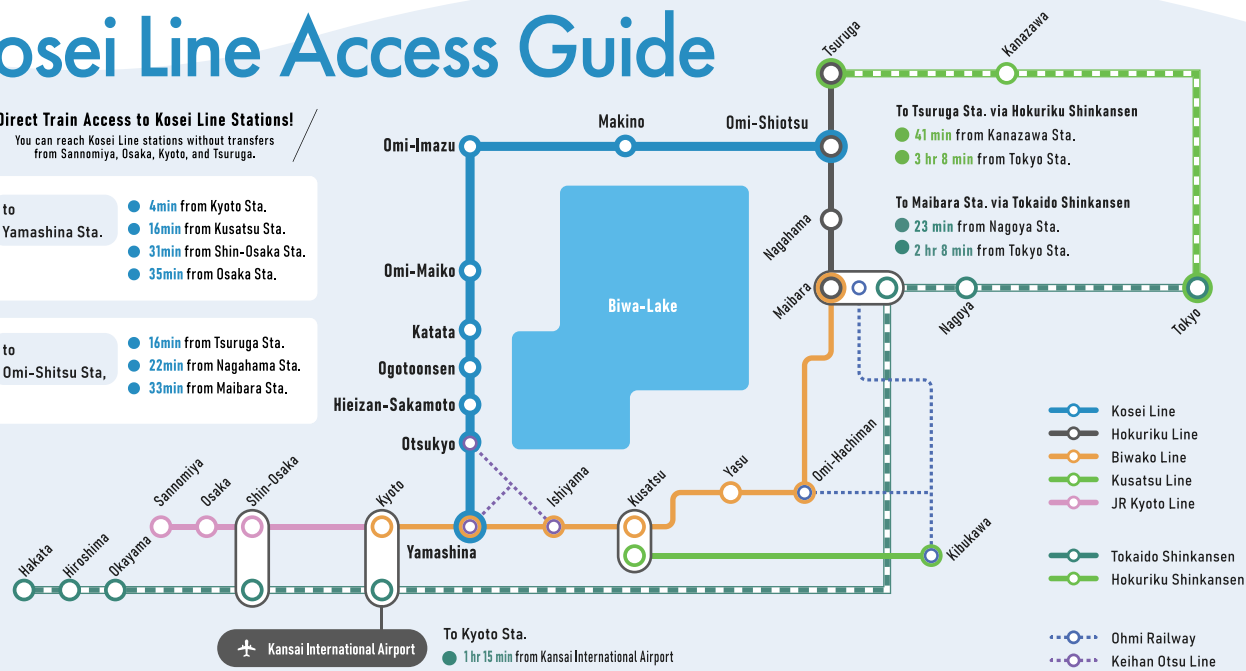
Note: The information provided is accurate as of March 2025. / Phone support is available in Japanese only.

Kosei Line Access Guide

Direct Train Access to Kosei Line Stations!
You can reach Kosei Line stations without transfers from Sannomiya, Osaka, Kyoto, and Tsuruga.

- to Yamashina Sta.
 - 4min from Kyoto Sta.
 - 16min from Kusatsu Sta.
 - 31min from Shin-Osaka Sta.
 - 35min from Osaka Sta.

- to Omi-Shiotsu Sta.
 - 16min from Tsuruga Sta.
 - 22min from Nagahama Sta.
 - 33min from Maibara Sta.



Tourist information

Looking for more tourist information about the Kosei Line?

SHIGA Tourism Official Website
SHIGA BIWAKO



<https://en.biwako-visitors.jp/>

BIWAKO OTSU TRAVEL GUIDE



<https://otsu.or.jp/en/>

BIWAKO TAKASHIMA TRAVEL GUIDE



<https://takashima-kanko.jp/en/>

NORTHERN LAKE BIWA TRAVEL GUIDE



https://kitabiwako.jp/en/travel_guide

We've launched official accounts to share the charms of the Kosei Line!

Kosei Line Instagram

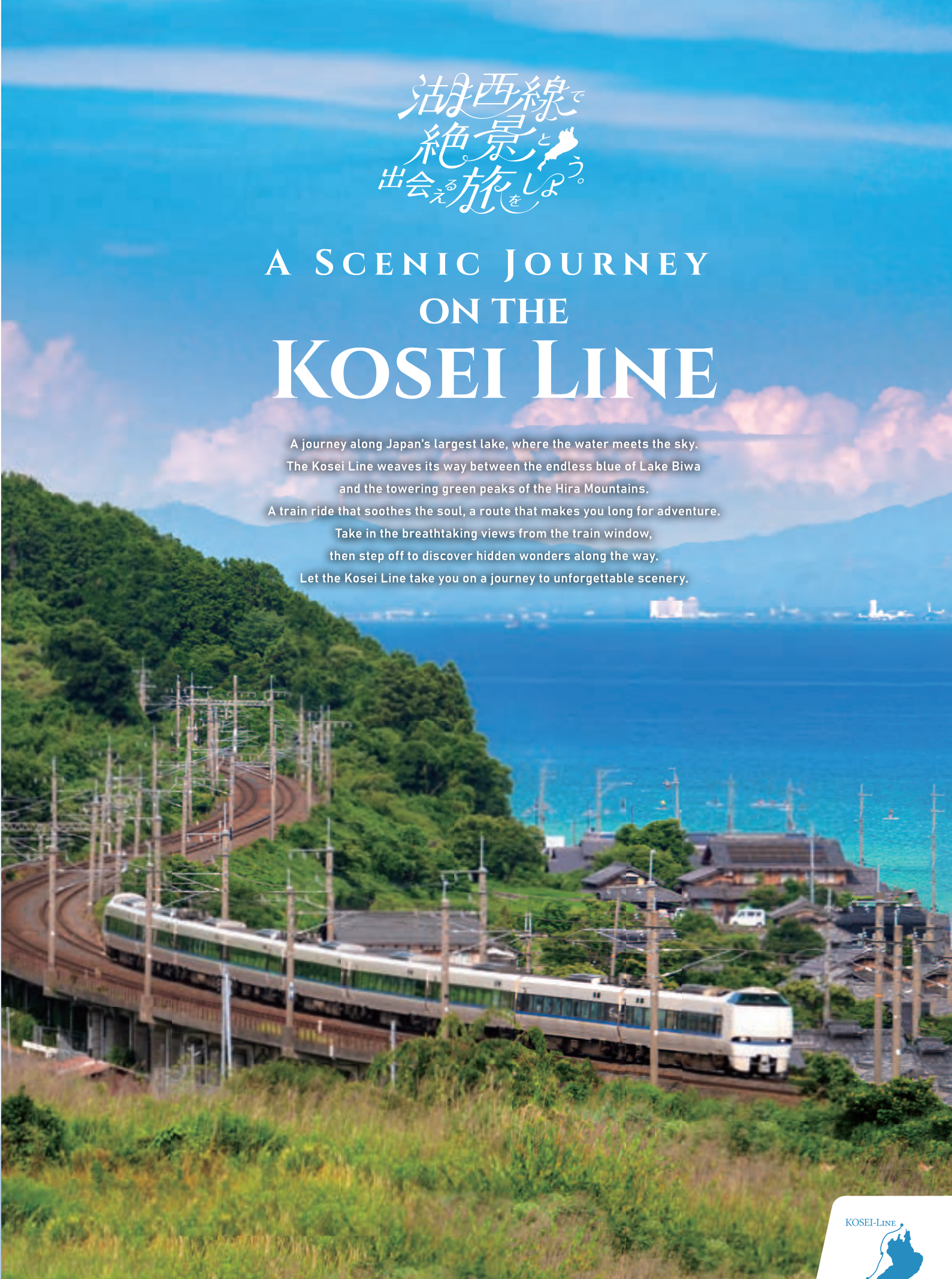


@koseisen_fan

湖西線で
絶景と
出会う旅をしよう。

A SCENIC JOURNEY ON THE KOSEI LINE

A journey along Japan's largest lake, where the water meets the sky. The Kosei Line weaves its way between the endless blue of Lake Biwa and the towering green peaks of the Hira Mountains. A train ride that soothes the soul, a route that makes you long for adventure. Take in the breathtaking views from the train window, then step off to discover hidden wonders along the way. Let the Kosei Line take you on a journey to unforgettable scenery.



A guide to discovering Lake Biwa and the journey it inspires.

湖西線利便性向上プロジェクト
Kosei Line Improvement Project



The Kosei Line runs along the western shore of Lake Biwa, connecting Yamashina Station to Omi-Shiotsu Station, where it meets the Hokuriku Line. Since most of the line is elevated, the view from the train is simply spectacular.

This scenic route between the lake and mountains is packed with breathtaking sights. Whether you're gazing out from the train window or stepping off to explore, you'll be captivated by the stunning landscapes.

Hop on the Kosei Line and embark on a journey to discover magnificent views!

Kosei Line's DATA

Opened: 1974
Total length: 74.1 km
Number of stations: 21
(including Yamashina and Omi-Shiotsu)



- 近江塩津 : Omi-Shiotsu
- 永原 : Nagahara
- マキノ : Makino
- 近江中庄 : Omi-Nakasho
- 近江今津 : Omi-Imazu
- 新旭 : Shin-asahi
- 安曇川 : Adogawa
- 近江高島 : Omi-Takashima
- 北小松 : Kitakomatsu
- 近江舞子 : Omi-Maiko
- 比良 : Hira
- 志賀 : Shiga
- 蓬萊 : Horai
- 和邇 : Wani
- 小野 : Ono
- 堅田 : Katata
- おんゝ温泉 : Ogotoonsen
- 比叡山坂本 : Heizan-Sakamoto
- 唐崎 : Karasaki
- 大津京 : Otsukyo
- 山科 : Yamashina



Scenic Views 車窓が絶景

from the Train Window

The Kosei Line, starting from Yamashina Station, is an elevated railway that offers stunning views from the train window! Just by riding, you can enjoy the feeling of a journey. Here are some of the best scenic spots along the Kosei Line.

Yamashina Sta. > Omi-Shiotsu Sta.

POINT
1

Horai Sta. > Shiga Sta. Getting closer and closer to Lake Biwa!

After departing from Yamashina Sta., you will soon catch sight of Japan's largest lake, Lake Biwa, on your right. Initially, it appears beyond the cityscape, but as you pass Katata Sta., the lake draws nearer. Around Horai Sta., a breathtaking panoramic view of Lake Biwa fills the train window. On your left, you can also spot the ropeway leading to Biwako Valley.

Shiga Sta. is the closest station to Lake Biwa!



POINT
2

Around Hira Sta. Evening Snow at Hira, Eight Views of Omi



In winter, the Kosei Line offers a view of 'Evening Snow at Hira' (Hira no Bosetsu), one of the Eight Views of Omi. Especially on clear days, the stunning contrast of the blue sky, silver mountains, and Lake Biwa creates a breathtaking scene. Ski resorts along the line are easily accessible by public transport, making the Kosei Line a perfect way to enjoy winter in Shiga.

KOSEI-Line route map



POINT
3

Kitakomatsu Sta. > Omi-Takashima Sta. Otomegaike Pond on the Right, Hira Mountains on the Left!

After passing Kitakomatsu Sta., Otomegaike Pond opens up on your right. This is a unique spot on the Kosei Line where you can see a serene waterscape, distinct from Lake Biwa, from the train window. In the distance, Lake Biwa extends, while the majestic Hira Mountains rise on your left. The beautiful contrast that unfolds on both sides of the train window is the highlight of this section.



POINT
4

Makino Sta. > Nagahara Sta.

Discovering Okubiwako Amidst the Mountains

This section, where the cherry blossom trees of Kaizu-Osaki stretch, is a spot where you can view the northern end of Lake Biwa, known as Okubiwako. As you enjoy the beautiful lake scenery, the train enters a deep forest. Emerging from the trees, a rural landscape unfolds, evoking a sense of nostalgia and wanderlust. This spot is filled with the unique charm of the Kosei Line, surrounded by nature.



We asked JR employees working on the Kosei Line!



What are their recommended scenic viewpoints along the Kosei Line?

Ogotoosen Sta.

The sunrise view from the platform is breathtaking! Lake Biwa, seen in the crisp winter air, is stunningly beautiful.

Horai Sta. > Shiga Sta.

Near Shiga Sta., on the mountain side, you'll find the torii gate of the popular photo spot, "Juge Shrine"!

Shiga Sta. > Hira Sta.

The rice seedlings spreading across the fields on the mountain side beautifully complement the summer blue sky!

Hira Sta. > Omi-Maiko Sta.

The "Omatuzaki", one of the Eight Views of Lake Biwa, is recommended from the train window!

Scenic Spots

to Explore After Getting Off the Train

降りても絶景

Even after disembarking from the Kosei Line, breathtaking views await. Here are some recommended spots around each station.

Dawn Redwood (Metasequoia) Avenue

A short bus ride or rental bike trip from Makino Sta. takes you to the breathtaking Dawn Redwood Avenue, a 2.4 km stretch lined with around 500 towering metasequoia trees. The scenery changes beautifully with the seasons - lush green in spring and summer, fiery red in autumn, and a mystical snow-covered wonderland in winter. The area also features cafes, farm experiences, a fresh produce market, and a horseback riding facility. Whether you take a leisurely stroll or feel the wind on a rental bike, this iconic tree-lined path is a must-see.

📍 Makinocho Hiruguchi-Makino, Takashima City, Shiga Pref.

🚌 6 min by bus from Makino Sta.

🚲 18 min by rental bicycle from Makino Sta.



Takashima City



Shirahige-jinja Shrine

A short ride along the lakeshore from Omi-Takashima Sta. by rental bicycle brings you to Shirahige Shrine, famous for its striking vermilion torii gate that stands in the waters of Lake Biwa. As Shiga's oldest shrine, with a history spanning over 2,000 years, it is often compared to the iconic Itsukushima Shrine. The most enchanting moments to visit are dawn and dusk when the mystical atmosphere intensifies. For the best view, visit "Aiko Shirahige-dai," a scenic observation deck near the shrine's main office.

📍 215 Ukawa, Takashima City, Shiga Pref.

⚠️ Crossing the national highway in front of Shirahige Shrine is extremely dangerous. Please use the designated photo spot instead.

☎️ 0740-36-1555

🚲 12 min by rental bicycle from Omi-Takashima Sta.

Takashima City

Biwako Valley

Reach Biwako Valley, 1,100m high, by bus and ropeway from Shiga Sta. Biwako Terrace offers breathtaking panoramic views of Lake Biwa and the surrounding mountains, creating the illusion of floating in the sky. Enjoy a wide range of activities year-round: ziplining and trekking in the refreshing summer air, and skiing and snowboarding on pristine slopes in winter.

📍 1547-1 Kido, Otsu City, Shiga Pref.

⚠️ Closed several times a year. Please check the official website for details.

☎️ 077-592-1155

🚌 15 min by bus from Shiga Sta. (to the ropeway Sta.)



Otsu City

Scenery of the Sugaura Lakeshore Village

Nagahama City



🚌 Approximately 20 min by taxi or community bus from Nagahara Sta.

🚲 45 min by rental bicycle from Nagahara Sta.

Sugaura, a 'hidden spot' of Okubiwako, offers stunning Nordic fjord-like views. Its historic streets, with old gates and the serene Suga Shrine, evoke a timeless atmosphere. Take a leisurely walk to immerse yourself in the tranquil lake scenery and the rich history of this unique village.

📍 Sugaura Hamlet, Nishiazai-cho, Nagahama City, Shiga Pref.

Makino Sunny Beach

Takashima City



🚶 10 min walk from Makino Sta.

🚲 4 min by rental bicycle from Makino Sta.

10-min walk from Makino Sta., stunning beach with views of Lake Biwa's islands. Enjoy swimming & BBQ in clear waters amidst white sand & pines.

📍 Nishihama, Makino-cho, Takashima City, Shiga Pref.

Chikubushima Island

Nagahama City



🚶 5 min walk from Omi-Imazu Sta. + Approximately 25 min by sightseeing boat from Imazu Port

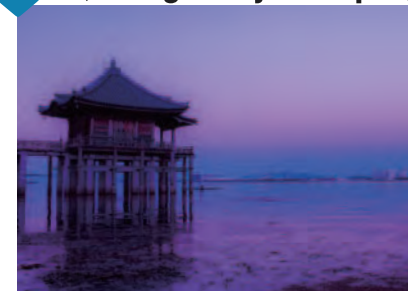
Chikubushima, a sacred isle floating on Lake Biwa, has drawn worshippers for centuries. A 25-min boat ride from Imazu Port (just a 5-min walk from Omi-Imazu Sta.) will take you to this mystical island. Here, ancient shrines and breathtaking rock formations await, whispering tales of gods and legends.

📍 Chikubushima, Hayazaki-cho, Nagahama City, Shiga Pref.

⚠️ An island entry fee is required when landing on Chikubushima Island (Adults: 600 yen, Children: 300 yen).

Ukimido (Mangetsuji Temple)

Otsu City



🚌 5 min by bus + 7 min walk from Katata Sta.

Ukimido a temple floating like a painting on Lake Biwa. Known as 'Katata Rakugan' in Omi's Eight Views, it's a must-see spot. Enjoy a stroll from Katata Sta., with cafes & restaurants nearby.

📍 1-16-18 Hon-Katata, Otsu City, Shiga Pref.

☎️ 077-572-0455

Kaizu-Osaki Peninsula

Takashima City



🚌 6 min by bus + 2 min walk from Makino Sta.

🚲 25 min by rental bicycle from Makino Sta.

800 cherry trees bloom along 4 km of lakeshore, with stunning views of Lake Biwa and Chikubushima Island. Enjoy walking/cycling through the cherry tunnel or take a scenic boat ride.

📍 Kaizu, Makino-cho, Takashima City, Shiga Pref.

A hill where you can see Lake Biwa

Takashima City



🚌 Approximately 20 min by bus from Omi-Imazu Sta.

🚲 33 min by rental bicycle from Omi-Imazu Sta. (to the gondola Sta.)

Biwako Hakodateyama's 630m hill offers paradise-like views of Lake Biwa. Photogenic spots, like the deck & wind chime path, overlook the lake. New cafes & shops are opening.

📍 Hiki-mae, Imazu-cho, Takashima City, Shiga Pref. (Biwako Hakodateyama)

⚠️ Open only during the green season. Please check the official website for details.

☎️ 0740-22-2486

Omimaiko Beach

Otsu City



🚶 7 min walk from Omi-Maiko Sta. (to Nakahama swimming beach)

Omimaiko Beach features 4km of scenic white sand, lined with green pines. With stunning views of Lake Biwa, enjoy swimming, windsurfing, or BBQ in crystal-clear waters

📍 Minami-Komatsu, Otsu City, Shiga Pref.

⚠️ Please check the official website for the swimming beach opening period.

☎️ 077-596-0520 (July and August only)

Former Chikurin-in Temple

Otsu City



🚌 5 min by bus + 3 min walk from Hieizan-Sakamoto Sta.

🚲 6 min by rental bicycle from Hieizan-Sakamoto Sta.

Chikurin-in, an old temple with Enryakuji roots, boasts a stunning moss garden, a national treasure. In autumn, the garden's maple leaves light up, creating a magical scene. Especially, the 'upside-down maples' reflecting the scenery are a must-see! It's a peaceful spot to feel history.

📍 5-2-13 Sakamoto, Otsu City, Shiga Pref.

☎️ 077-578-0955

Note: The information provided is accurate as of March 2025 / Phone support is available in Japanese only.

Scenic Dining Experiences

食ベアも絶景

The Kosei Line area offers many charming restaurants and cafés where you can enjoy delicious food with breathtaking views. Take a break from your journey and savor a meal while admiring the stunning scenery of lakes and mountains.

Cafe Koan

A scenic cafe with a panoramic view of Lake Biwa, the sky, and the Kosei Line. Located on a hill in the Hira Mountains, a 15-min walk from Shiga Station. Enjoy unique dishes like unsweetened French toast burgers and 'Castella Shake' while watching trains pass by. A special experience with Kosei Line views!

1224-2 Kido, Otsu City, Shiga Pref.
070-8471-5644

15 min walk from Shiga Sta.

Nearby Spot Biwako Valley



Relax in a space with open views!



Otsu City

Nagahama City

Minna no Ie Tokihiro Terrace

A cafe restaurant overlooking the northernmost part of Lake Biwa. About a 10-min rental bike ride from Nagahara Station, en route to Sugaura Lakeshore Village. Enjoy heartwarming home-style lunches and sweets with a lake view. Relax on the spacious terrace, surrounded by nature. Savor local dishes and the beauty of Okubiwako.

1484-1 Okude, Sugaura, Nishiazai-cho, Nagahama City, Shiga Pref.
0749-56-2934

11 min rental bike ride from Nagahara Sta.

Nearby Spot Sugaura lakeside village

Heartwarming food and nature's hospitality



Takashima City



Antique & Cafe Kaizu

A cafe in a 200-year-old rice store, with antique goods. Enjoy special coffee with views of the famous cherry blossom spot, Kaizu-Osaki.

2080-7 Kaizu, Makino-cho, Takashima City, Shiga Pref.
0740-28-8055

14 min rental bike ride from Makino Sta.

Nearby Spot Kaizu-Osaki

Takashima City



Namiki Cafe Metasequoia

A cafe restaurant with Metasequoia tree views. Enjoy cafe menus with local veggies and fruits.

835-1 Terakubo, Makino-cho, Takashima City, Shiga Pref. (Makino Pick Land)
0740-27-0068

6 min bus ride from Makino Sta.

18 min rental bike ride

Nearby Spot Metasequoia trees

Takashima City



CRAG cafe & SUP

A lakeside cafe with SUP and other activities. Try their roast beef sandwich!

111 Imazu, Imazu-cho, Takashima City, Shiga Pref.
080-4235-1084

12 min walk from Omi-Imazu Sta.

Nearby Spot Imazu Port

Takashima City



Shirahige Soba

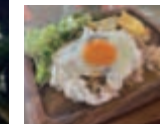
Enjoy ten-wari soba and mackerel sushi after visiting Shirahige Shrine. Lake views from window seats!

293 Ukawa, Takashima City, Shiga Pref.
0740-20-2251

12 min rental bike ride from Omi-Takashima Sta.

Nearby Spot Shirahige Shrine

Otsu City



R cafe

A Hawaiian-style beachside cafe. Enjoy marine sports and a resort feel!

934-1 Kitahira, Otsu City, Shiga Pref.
077-596-1355

17 min walk from Omi-Maiko Sta.

Nearby Spot Omimaiko Beach

Otsu City



Pecorino

A scenic restaurant overlooking Ukimido from its terrace. Enjoy authentic Italian cuisine with local ingredients

1-18-5 Hon-Katata, Otsu City, Shiga Pref.
077-572-8138

22 min walk from Katata Sta.

10 min bus + 7 min walk

Nearby Spot Ukimido

Note: The information provided is accurate as of March 2025 / Phone support is available in Japanese only.

Did you know?

Trivia

about the Kosei Line!

Trivia
Transfers

Shinkaisoku Stops
Rapid/Local Stops

● Nearby Spots
★ Featured in Pamphlet

