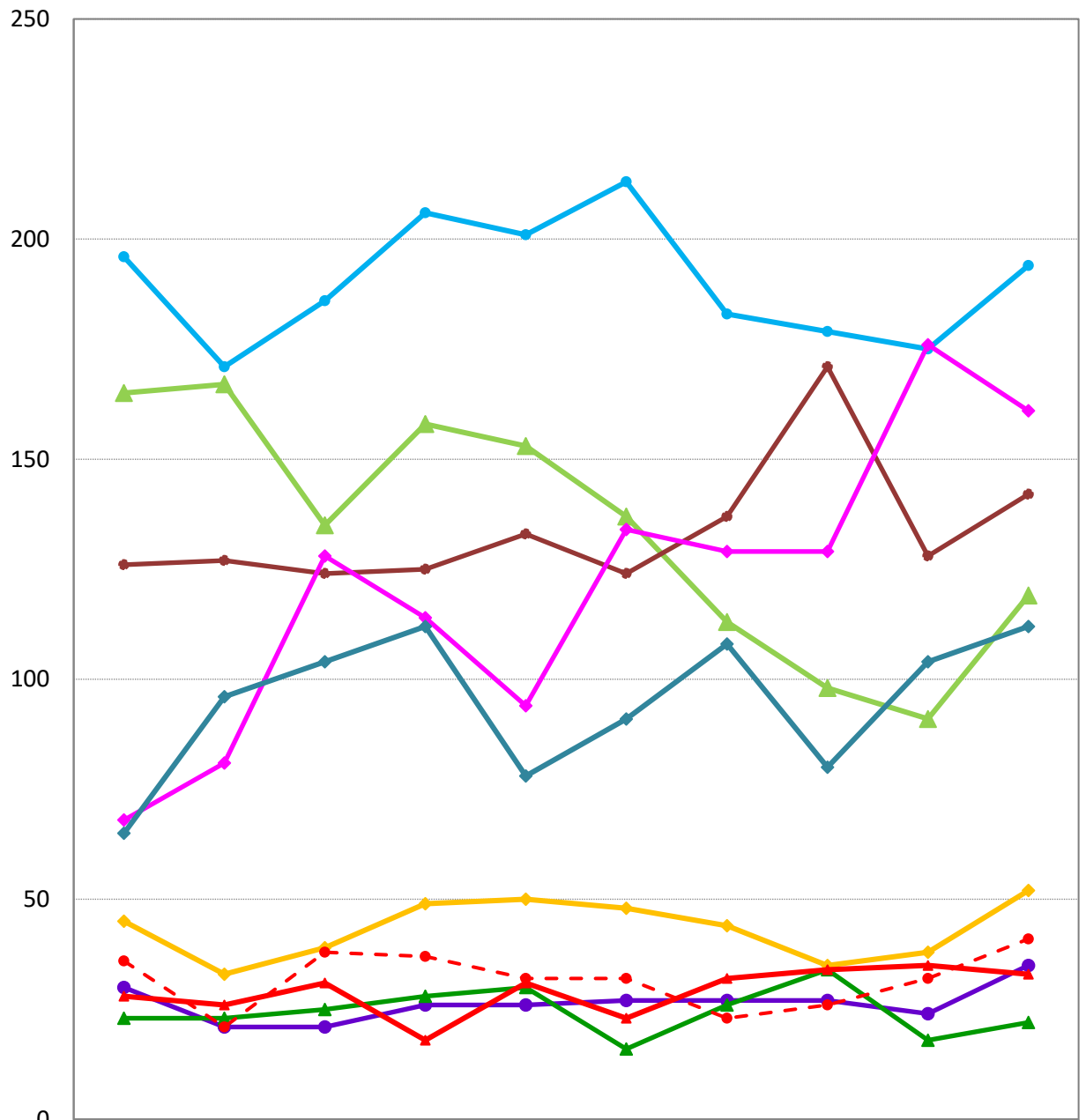
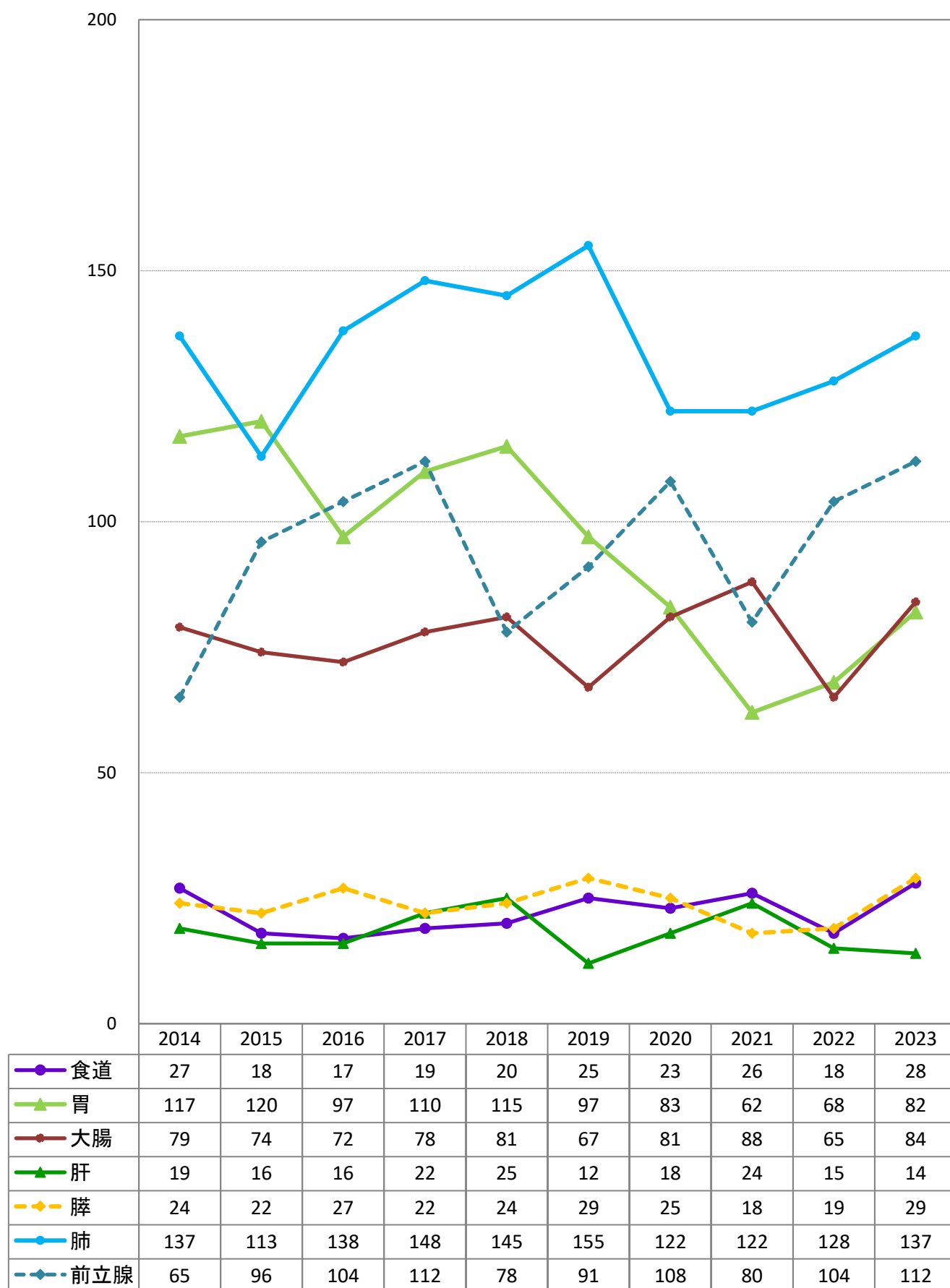


診断年別_主要部位別_件数（上皮内がんを除く）（初発のみ）（男女計）

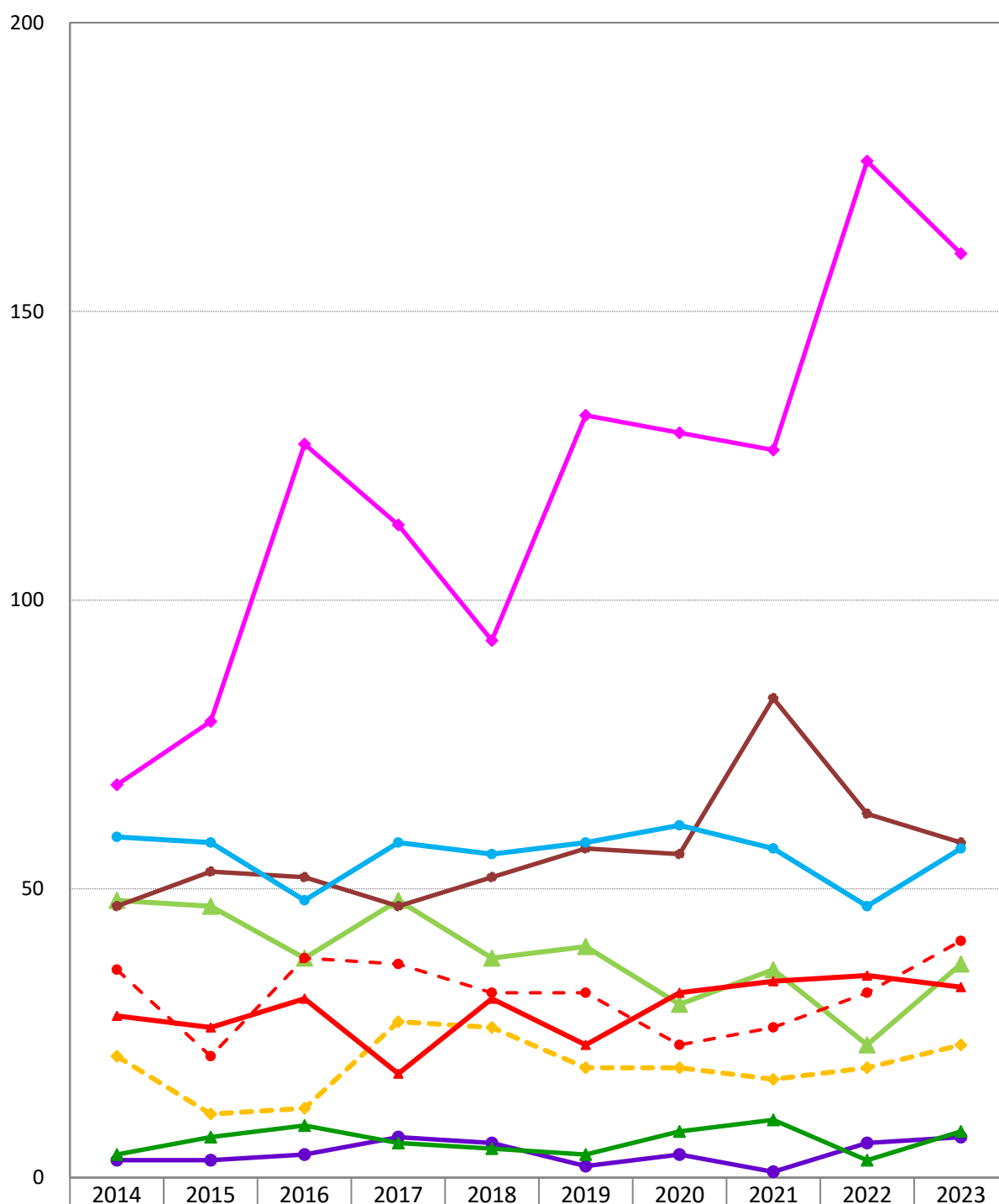


	2014	2015	2016	2017	2018	2019	2020	2021	2022	2023
● 食道	30	21	21	26	26	27	27	27	24	35
▲ 胃	165	167	135	158	153	137	113	98	91	119
● 大腸	126	127	124	125	133	124	137	171	128	142
▲ 肝	23	23	25	28	30	16	26	34	18	22
◆ 膵	45	33	39	49	50	48	44	35	38	52
● 肺	196	171	186	206	201	213	183	179	175	194
◆ 乳房	68	81	128	114	94	134	129	129	176	161
-●- 子宮頸部	36	21	38	37	32	32	23	26	32	41
▲ 子宮体部	28	26	31	18	31	23	32	34	35	33
◆ 前立腺	65	96	104	112	78	91	108	80	104	112

診断年別_主な原発部位別_件数（上皮内がんを除く）（初発のみ）（男性）



診断年別_主な原発部位別_件数（上皮内がんを除く）（初発のみ）（女性）



	2014	2015	2016	2017	2018	2019	2020	2021	2022	2023
● 食道	3	3	4	7	6	2	4	1	6	7
▲ 胃	48	47	38	48	38	40	30	36	23	37
● 大腸	47	53	52	47	52	57	56	83	63	58
▲ 肝	4	7	9	6	5	4	8	10	3	8
◆ 膵	21	11	12	27	26	19	19	17	19	23
● 肺	59	58	48	58	56	58	61	57	47	57
◆ 乳房	68	79	127	113	93	132	129	126	176	160
-●- 子宮頸部	36	21	38	37	32	32	23	26	32	41
▲ 子宮体部	28	26	31	18	31	23	32	34	35	33

主要部位別_診断年別_UICC病期別_件数（上皮内がんを含む）（初発のみ）

【2】2

原発部位	診断年	初発診断数	UICC 治療前病期(c-Stage)							UICC 術後病理学的病期(p-Stage)							手術なし
			0期	I 期	II 期	III 期	IV 期	不明 該当なし	I 期 IV 期比	0期	I 期	II 期	III 期	IV 期	術前 治療あり	不明 該当なし	
食道	2014	32	2	11	3	8	7	1	1.6	2	8	1	2	1	2		16
	2015	22	1	8	2	7	3	1	2.7	1	4	1		1	3		12
	2016	28	6	10	5	2	5		2.0	7	6		1	1	3		10
	2017	30	4	7	1	9	9		0.8	4	5	1	1		3		16
	2018	32	6	7	3	7	7	2	1.0	6	7				7	2	10
	2019	34	6	12	4	3	6	3	2.0	7	4	1			2	2	18
	2020	28	2	6	4	7	8	1	0.8	1	7		1	2	4		13
	2021	28		8	4	4	11	1	0.7	1	7	1	2		1	1	15
	2022	24		8	5	4	4	3	2.0		8	3			2	1	10
	2023	38	2	11	6	5	7	7	1.6	3	9	1	1	1	2	1	20
胃	2014	166		103	22	21	17	3	6.1		90	17	20	9	1	1	28
	2015	169		95	19	20	33	2	2.9		76	20	16	9		6	42
	2016	142		83	19	17	15	8	5.5		73	9	21	9	2		28
	2017	162		96	22	11	24	9	4.0		89	11	16	7	4		35
	2018	153		98	14	14	25	2	3.9		85	14	14	8	1	4	27
	2019	138		88	6	11	23	10	3.8		77	6	13	4	5	2	31
	2020	113		54	19	15	16	9	3.4		46	14	13	5	1	3	31
	2021	98		44	15	10	24	5	1.8		38	12	8	2	5	3	30
	2022	91		56	6	12	16	1	3.5		48	9	8	1	5	2	18
	2023	119		62	13	12	24	8	2.6		51	12	9	5		6	36
大腸 (結腸 + 直腸)	2014	140	13	45	24	31	22	5	2.0	14	40	25	32	12	4	2	11
	2015	149	19	54	27	20	25	4	2.2	21	45	29	19	17	2	3	13
	2016	149	22	54	19	19	25	10	2.2	24	42	23	26	15	5		14
	2017	151	23	45	34	19	27	3	1.7	26	36	26	22	21	6		14
	2018	165	19	50	22	41	27	6	1.9	32	31	29	32	14	9	3	15
	2019	160	29	46	18	37	22	8	2.1	36	30	27	26	11	9	2	19
	2020	164	25	35	39	28	31	6	1.1	27	31	39	23	18	7		19
	2021	193	18	43	52	33	41	6	1.0	22	45	40	32	20	12		22
	2022	142	13	32	28	28	35	6	0.9	14	20	31	32	11	7		27
	2023	166	19	31	36	31	23	26	1.3	24	24	32	34	10	12	2	28
肝	2014	23		12	5	3	2	1	6.0		10	2					11
	2015	23		9	6	5	3		3.0		5	3	2	1			12
	2016	25		10	4	6	3	2	3.3		5	3	2				15
	2017	28		16	7	4	1		16.0		7	3	1				17
	2018	30		18	3	3	3	3	6.0		12	1	1	1			15
	2019	16		4	7	2	2	1	2.0		2	3				2	9
	2020	26		10	6	4	3	3	3.3		6		1			3	16
	2021	34		21	3	4		6	-		12	4	2		1		15
	2022	18		8	8	1	1	0	8.0		6	5					7
	2023	22		11	4	5	2		5.5		6	4					12
膵	2014	49	2	4	15	6	18	4	0.2	4	1	14	1	3	1	3	22
	2015	34		3	6	5	20		0.2	1		6		2		1	24
	2016	39		6	10	1	21	1	0.3		3	8		3	1		24
	2017	49		1	16	5	24	3	0.04		1	9		1	3		35
	2018	50		16	5	4	25		0.6		2	9	1	3	3	1	31
	2019	48		16	3	2	26	1	0.6		4	7	1	3	4		29
	2020	44		7	4	7	26		0.3		2	4				3	35
	2021	35		11	1	7	14	2	0.8			4			4	1	26
	2022	40	1	8	5	5	20	1	0.4	2	1	2			4		31
	2023	52		19	7	2	20	4	1.0		1	2	2		12		35

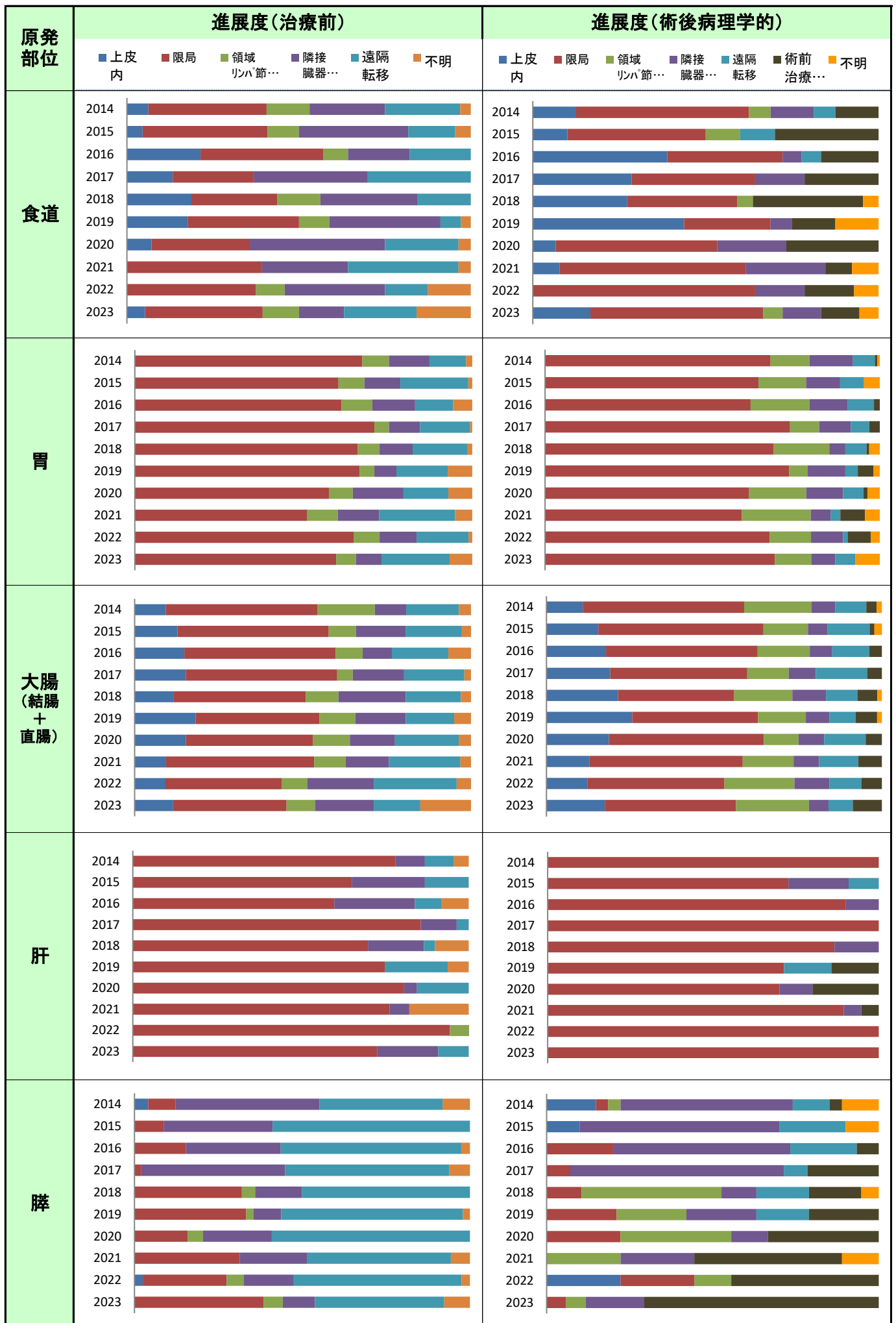
主要部位別_診断年別_UICC病期別_件数（上皮内がんを含む）（初発のみ）

【2】2

原発部位	診断年	初発診断数	UICC 治療前病期(c-Stage)							UICC 術後病理学的病期(p-Stage)							手術なし
			0期	I 期	II 期	III 期	IV 期	不明 該当なし	I 期 IV 期比	0期	I 期	II 期	III 期	IV 期	術前 治療あり	不明 該当なし	
肺	2014	197		85	16	29	57	10	1.5	1	65	11	9	5	1	2	103
	2015	171		61	15	32	57	6	1.1		53	7	14	2	3		92
	2016	186		94	15	20	52	5	1.1		70	8	7	10	4		87
	2017	206		83	18	36	65	4	1.3		64	13	10	5	2		112
	2018	203		82	17	34	59	11	1.4	2	66	13	10	5	3	2	102
	2019	221	6	91	20	24	71	9	1.3	8	74	15	9	7	2		106
	2020	187		73	15	30	66	3	1.1	4	62	7	10	2	1	2	99
	2021	186	2	82	16	29	45	12	1.8	7	67	10	16	6	1	1	78
	2022	177	1	69	16	22	65	4	1.1	2	67	6	8	1			93
	2023	196	2	83	13	23	65	10	1.3	2	66	10	7	3	3	2	103
乳房	2014	74	3	33	26	5	4	3	8.3	6	30	21	2		1	1	13
	2015	94	8	51	22	5	7	1	7.3	12	40	21	3	1	4		13
	2016	144	24	67	30	12	10	1	6.7	15	64	20	12	1	23		9
	2017	137	26	55	34	12	4	6	13.8	21	50	20	7		28	3	8
	2018	111	16	47	28	6	5	9	9.4	17	38	12	3		31		10
	2019	152	20	64	44	13	8	3	8.0	18	62	18	9		34		11
	2020	147	19	62	37	16	7	6	8.9	18	47	23	6		35	1	17
	2021	149	20	59	41	19	7	3	8.4	20	39	22	14		38		16
	2022	200	32	69	66	17	15	1	4.6	22	60	33	3		58		24
	2023	204	47	76	39	12	7	23	10.9	40	73	30	7		32	3	19
子宮頸部	2014	113	69	20	4	8		12	-	76	17	1	6		6		7
	2015	101	77	9	6	3	1	5	9.0	76	8	1	1	2	3		10
	2016	132	93	14	4	9	8	4	1.8	92	12	1	6	2	3		16
	2017	108	74	9	18	5	2		4.5	69	10	2	5	1	3		18
	2018	94	65	8	11	7	2	1	4.0	58	10	2	3		2	1	18
	2019	81	50	9	9	6	7		1.3	47	4	2	2		4		22
	2020	78	57	9	5	2	4	1	2.3	55	7	2	3		2		9
	2021	82	58	8	11	4	1		8.0	53	7	1	6		3		12
	2022	84	53	5	11	11	2	2	2.5	50	6		2		2		24
	2023	71	37	10	9	14		1	-	29	12		3		1		26
子宮体部	2014	28		22	1	1	1	3	22.0		20	1	3				4
	2015	26		20	4	1	1		20.0		17	4	2	1		1	1
	2016	31		22	2	4	1	2	22.0		21	3	3	1			3
	2017	18		13		2	1	2	13.0		12	1	3				2
	2018	31		28		2	1		28.0		20	1	5	1	1		3
	2019	23		18		4	1		18.0		17	3	2		1		
	2020	32		27	1	1	1	2	27.0		27		3	1			1
	2021	34		27	1	2	4		6.8		27			3	1		3
	2022	35		28	1	4	2		14.0		26	2	3	2			2
	2023	33		25	2	2	4		6.3		21	1	6	4		1	
前立腺	2014	65		23	28	5	9		2.6		3	12	13	7			30
	2015	96		33	38	13	12		2.8		4	22	5	4			61
	2016	104		33	34	14	21	2	1.6		4	13	10	2	2		73
	2017	112		49	26	19	16	2	3.1		1	12	3		2		94
	2018	78		29	17	19	11	2	2.6		1	7	2				68
	2019	91		43	16	18	11	3	3.9		3	17	1		4		66
	2020	108		48	17	25	16	2	3.0		6	14	2	1	2		83
	2021	80		32	14	20	12	2	2.7		5	10	2				63
	2022	104		41	16	24	21	2	2.0			18	9	2	1		74
	2023	112		40	25	24	19	4	2.1			14	7		1		90

原発部位	UICC(治療前) c-Stage						UICC(術後病理学的) p-Stage						
	0期	I期	II期	III期	IV期	不明	0期	I期	II期	III期	IV期	術前	不明
肺	2014	[Stacked bar chart for Lung c-Stage 2014]					[Stacked bar chart for Lung p-Stage 2014]						
	2015	[Stacked bar chart for Lung c-Stage 2015]					[Stacked bar chart for Lung p-Stage 2015]						
	2016	[Stacked bar chart for Lung c-Stage 2016]					[Stacked bar chart for Lung p-Stage 2016]						
	2017	[Stacked bar chart for Lung c-Stage 2017]					[Stacked bar chart for Lung p-Stage 2017]						
	2018	[Stacked bar chart for Lung c-Stage 2018]					[Stacked bar chart for Lung p-Stage 2018]						
	2019	[Stacked bar chart for Lung c-Stage 2019]					[Stacked bar chart for Lung p-Stage 2019]						
	2020	[Stacked bar chart for Lung c-Stage 2020]					[Stacked bar chart for Lung p-Stage 2020]						
	2021	[Stacked bar chart for Lung c-Stage 2021]					[Stacked bar chart for Lung p-Stage 2021]						
	2022	[Stacked bar chart for Lung c-Stage 2022]					[Stacked bar chart for Lung p-Stage 2022]						
	2023	[Stacked bar chart for Lung c-Stage 2023]					[Stacked bar chart for Lung p-Stage 2023]						
乳房	2014	[Stacked bar chart for Breast c-Stage 2014]					[Stacked bar chart for Breast p-Stage 2014]						
	2015	[Stacked bar chart for Breast c-Stage 2015]					[Stacked bar chart for Breast p-Stage 2015]						
	2016	[Stacked bar chart for Breast c-Stage 2016]					[Stacked bar chart for Breast p-Stage 2016]						
	2017	[Stacked bar chart for Breast c-Stage 2017]					[Stacked bar chart for Breast p-Stage 2017]						
	2018	[Stacked bar chart for Breast c-Stage 2018]					[Stacked bar chart for Breast p-Stage 2018]						
	2019	[Stacked bar chart for Breast c-Stage 2019]					[Stacked bar chart for Breast p-Stage 2019]						
	2020	[Stacked bar chart for Breast c-Stage 2020]					[Stacked bar chart for Breast p-Stage 2020]						
	2021	[Stacked bar chart for Breast c-Stage 2021]					[Stacked bar chart for Breast p-Stage 2021]						
	2022	[Stacked bar chart for Breast c-Stage 2022]					[Stacked bar chart for Breast p-Stage 2022]						
	2023	[Stacked bar chart for Breast c-Stage 2023]					[Stacked bar chart for Breast p-Stage 2023]						
子宮頸部	2014	[Stacked bar chart for Cervix c-Stage 2014]					[Stacked bar chart for Cervix p-Stage 2014]						
	2015	[Stacked bar chart for Cervix c-Stage 2015]					[Stacked bar chart for Cervix p-Stage 2015]						
	2016	[Stacked bar chart for Cervix c-Stage 2016]					[Stacked bar chart for Cervix p-Stage 2016]						
	2017	[Stacked bar chart for Cervix c-Stage 2017]					[Stacked bar chart for Cervix p-Stage 2017]						
	2018	[Stacked bar chart for Cervix c-Stage 2018]					[Stacked bar chart for Cervix p-Stage 2018]						
	2019	[Stacked bar chart for Cervix c-Stage 2019]					[Stacked bar chart for Cervix p-Stage 2019]						
	2020	[Stacked bar chart for Cervix c-Stage 2020]					[Stacked bar chart for Cervix p-Stage 2020]						
	2021	[Stacked bar chart for Cervix c-Stage 2021]					[Stacked bar chart for Cervix p-Stage 2021]						
	2022	[Stacked bar chart for Cervix c-Stage 2022]					[Stacked bar chart for Cervix p-Stage 2022]						
	2023	[Stacked bar chart for Cervix c-Stage 2023]					[Stacked bar chart for Cervix p-Stage 2023]						
子宮体部	2014	[Stacked bar chart for Uterus c-Stage 2014]					[Stacked bar chart for Uterus p-Stage 2014]						
	2015	[Stacked bar chart for Uterus c-Stage 2015]					[Stacked bar chart for Uterus p-Stage 2015]						
	2016	[Stacked bar chart for Uterus c-Stage 2016]					[Stacked bar chart for Uterus p-Stage 2016]						
	2017	[Stacked bar chart for Uterus c-Stage 2017]					[Stacked bar chart for Uterus p-Stage 2017]						
	2018	[Stacked bar chart for Uterus c-Stage 2018]					[Stacked bar chart for Uterus p-Stage 2018]						
	2019	[Stacked bar chart for Uterus c-Stage 2019]					[Stacked bar chart for Uterus p-Stage 2019]						
	2020	[Stacked bar chart for Uterus c-Stage 2020]					[Stacked bar chart for Uterus p-Stage 2020]						
	2021	[Stacked bar chart for Uterus c-Stage 2021]					[Stacked bar chart for Uterus p-Stage 2021]						
	2022	[Stacked bar chart for Uterus c-Stage 2022]					[Stacked bar chart for Uterus p-Stage 2022]						
	2023	[Stacked bar chart for Uterus c-Stage 2023]					[Stacked bar chart for Uterus p-Stage 2023]						
前立腺	2014	[Stacked bar chart for Prostate c-Stage 2014]					[Stacked bar chart for Prostate p-Stage 2014]						
	2015	[Stacked bar chart for Prostate c-Stage 2015]					[Stacked bar chart for Prostate p-Stage 2015]						
	2016	[Stacked bar chart for Prostate c-Stage 2016]					[Stacked bar chart for Prostate p-Stage 2016]						
	2017	[Stacked bar chart for Prostate c-Stage 2017]					[Stacked bar chart for Prostate p-Stage 2017]						
	2018	[Stacked bar chart for Prostate c-Stage 2018]					[Stacked bar chart for Prostate p-Stage 2018]						
	2019	[Stacked bar chart for Prostate c-Stage 2019]					[Stacked bar chart for Prostate p-Stage 2019]						
	2020	[Stacked bar chart for Prostate c-Stage 2020]					[Stacked bar chart for Prostate p-Stage 2020]						
	2021	[Stacked bar chart for Prostate c-Stage 2021]					[Stacked bar chart for Prostate p-Stage 2021]						
	2022	[Stacked bar chart for Prostate c-Stage 2022]					[Stacked bar chart for Prostate p-Stage 2022]						
	2023	[Stacked bar chart for Prostate c-Stage 2023]					[Stacked bar chart for Prostate p-Stage 2023]						

原発部位	診断年	初発診断数	進展度(治療前)							進展度(術後病理学的)							手術なし	
			上皮内	限局	領域リンパ節転移	隣接臓器浸潤	遠隔転移	不明該当なし	限局率	上皮内	限局	領域リンパ節転移	隣接臓器浸潤	遠隔転移	術前治療あり	不明該当なし		限局率
食道	2014	32	2	11	4	7	7	1	40.6%	2	8	1	2	1	2		62.5%	16
	2015	22	1	8	2	7	3	1	40.9%	1	4	1		1	3		50.0%	12
	2016	28	6	10	2	5	5		57.1%	7	6		1	1	3		72.2%	10
	2017	30	4	7		10	9		36.7%	4	5		2		3		64.3%	16
	2018	32	6	8	4	9	5		43.8%	6	7	1			7		59.1%	10
	2019	34	6	11	3	11	2	1	50.0%	7	4		1		2	2	68.8%	18
	2020	28	2	8		11	6	1	35.7%	1	7		3		4		53.3%	13
	2021	28		11		7	9	1	39.3%	1	7		3		1		61.5%	15
	2022	24		9	2	7	3	3	37.5%		9		2		2	1	64.3%	10
	2023	38	2	13	4	5	8	6	39.5%	3	9	1	2		2	1	66.7%	20
胃	2014	166		112	13	20	18	3	67.5%		93	16	18	9	1	1	67.4%	28
	2015	169		102	13	18	34	2	60.4%		81	18	13	9		6	63.8%	42
	2016	142		87	13	18	16	8	61.3%		70	20	13	9	2		61.4%	28
	2017	162		115	7	15	24	1	71.0%		93	11	12	7	4		73.2%	35
	2018	153		101	10	15	25	2	66.0%		86	21	6	8	1		68.3%	27
	2019	138		92	6	9	21	10	66.7%		78	6	12	4	5	2	72.9%	31
	2020	113		65	8	17	15	8	57.5%		50	14	9	5	1	3	61.0%	31
	2021	98		50	9	12	22	5	51.0%		40	14	4	2	5	3	58.8%	30
	2022	91		59	7	10	14	1	64.8%		49	9	7	1	5	2	67.1%	18
	2023	119		71	7	9	24	8	59.7%		57	9	6	5		6	68.7%	36
大腸(結腸+直腸)	2014	140	13	63	24	13	22	5	54.3%	14	62	26	9	12	4	2	58.9%	11
	2015	149	19	67	12	22	25	4	57.7%	21	67	18	8	17	2	3	64.7%	13
	2016	149	22	67	12	13	25	10	59.7%	24	61	21	9	15	5		63.0%	14
	2017	151	23	68	7	23	27	3	60.3%	26	56	17	11	21	6		59.9%	14
	2018	165	19	65	16	33	27	5	50.9%	32	52	26	15	14	9		56.0%	15
	2019	160	29	59	17	24	23	8	55.0%	36	53	20	10	11	9	2	63.1%	19
	2020	164	25	62	18	22	31	6	53.0%	27	67	15	11	18	7		64.8%	19
	2021	193	18	85	18	25	41	6	53.4%	22	78	26	13	20	12		58.5%	22
	2022	142	13	49	11	28	35	6	43.7%	14	47	24	12	11	7		53.0%	27
	2023	166	19	56	14	29	23	25	45.2%	24	54	30	8	10	12		56.5%	28
肝	2014	23		18		2	2	1	78.3%		12						100.0%	11
	2015	23		15		5	3		65.2%		8		2	1			72.7%	12
	2016	25		15		6	2	2	60.0%		9		1				90.0%	15
	2017	28		24		3	1		85.7%		11						100.0%	17
	2018	30		21		5	1	3	70.0%		13		2				86.7%	15
	2019	16		12			3	1	75.0%		5			1			71.4%	9
	2020	26		21		1	4		80.8%		7		1			2	70.0%	16
	2021	34		26		2		6	76.5%		17		1			1	89.5%	15
	2022	18		17	1				94.4%		11						100.0%	7
	2023	22		16		4	2		72.7%		10						100.0%	12
膵	2014	49	2	4		21	18	4	12.2%	4	1	1	14	3	1	3	18.5%	22
	2015	34		3		11	20		8.8%	1			6	2		1	10.0%	24
	2016	39		6		11	21	1	15.4%		3		8	3	1		20.0%	24
	2017	49		1		21	24	3	2.0%		1		9	1	3		7.1%	35
	2018	50		16	2	7	25		32.0%		2	8	2	3	3		10.5%	31
	2019	48		16	1	4	26	1	33.3%		4	4	4	3	4		21.1%	29
	2020	44		7	2	9	26		15.9%		2	3	1		3		22.2%	35
	2021	35		11		7	15	2	31.4%			2	2		4		0.0%	26
	2022	40		1	10	2	6	20	1	27.5%	2	2	1			4	44.4%	31
	2023	52		20	3	5	20	4	38.5%		1	1	3		12		5.9%	35



原発部位	診断年	初発診断数	進展度(治療前)							進展度(術後病理学的)							手術なし	
			上皮内	限局	領域リンパ節転移	隣接臓器浸潤	遠隔転移	不明 該当なし	限局率	上皮内	限局	領域リンパ節転移	隣接臓器浸潤	遠隔転移	術前治療あり	不明 該当なし		限局率
肺	2014	197		91	20	13	63	10	46.2%	1	66	13	6	5	1		71.3%	103
	2015	171		69	18	12	66	6	40.4%		55	14	5	2	3		69.6%	92
	2016	186		98	14	8	61	5	52.7%		73	8	3	11	4		73.7%	87
	2017	206		87	29	16	70	4	42.2%		65	18	3	6	2		69.1%	112
	2018	203		85	14	29	64	11	41.9%	2	66	13	10	5	3		67.3%	102
	2019	221	6	95	12	22	79	7	45.7%	8	81	12	5	7	2		77.4%	106
	2020	187		81	9	28	66	3	43.3%	4	65	5	10	2	1		78.4%	99
	2021	186	2	86	12	25	49	12	47.3%	7	70	11	12	6	1	1	71.3%	78
	2022	177	1	74	13	16	70	3	42.4%	2	69	3	9	1			84.5%	93
	2023	196	2	83	12	21	68	10	43.4%	2	67	10	6	3	3	2	74.2%	103
乳房	2014	74	3	57	3	4	4	3	81.1%	6	45	8			1	1	83.6%	13
	2015	94	8	67	7	4	7	1	79.8%	12	48	14	2	1	4		74.1%	13
	2016	144	24	87	15	6	11	1	77.1%	15	70	22	3	2	23		63.0%	9
	2017	137	26	74	18	8	5	6	73.0%	21	59	15	3		28		62.0%	8
	2018	111	16	67	13	3	5	7	74.8%	17	46	6	1		31		62.4%	10
	2019	152	20	95	17	8	9	3	75.7%	18	68	18	3		34		61.0%	11
	2020	147	19	84	19	11	8	6	70.1%	18	60	12	4		35	1	60.0%	17
	2021	149	20	85	20	12	9	3	70.5%	20	52	19	4		38		54.1%	16
	2022	200	32	114	27	10	16	1	73.0%	22	78	17	1		58		56.3%	24
	2023	204	47	102	16	7	9	23	73.0%	40	83	25	1	1	32	3	66.5%	19
子宮頸部	2014	113	69	20	1	11		12	78.8%	76	17	1	6		6		87.7%	7
	2015	101	77	9	1	8	1	5	85.1%	76	8		2	2	3		92.3%	10
	2016	132	93	14	2	11	8	4	81.1%	92	12	2	5	2	3		89.7%	16
	2017	108	74	9		24	1		76.9%	69	10	2	5	1	3		87.8%	18
	2018	94	65	8	1	17	2	1	77.7%	58	10		5		2		89.5%	18
	2019	81	50	9		17	5		72.8%	47	4	1	3		4		86.4%	22
	2020	78	57	9	1	6	4	1	84.6%	55	8	2	2		2		91.3%	9
	2021	82	58	8		15	1		80.5%	53	8	2	4		3		87.1%	12
	2022	84	53	5	1	23		2	69.0%	50	6	1	1		2		93.3%	24
	2023	71	37	10		23		1	66.2%	29	12	2	1		1		91.1%	26
子宮体部	2014	28		22		2	1	3	78.6%		20	2	2				83.3%	4
	2015	26		20		5	1		76.9%		17	1	5	1			68.0%	1
	2016	31		22		7		2	71.0%		21		6	1			75.0%	3
	2017	18		13		2	1	2	72.2%		12	1	3				75.0%	2
	2018	31		28		2	1		90.3%		20	1	5	1	1		71.4%	3
	2019	23		18	1	3	1		78.3%		17		5		1		73.9%	
	2020	32		27		2	1	2	84.4%		27		3	1			87.1%	1
	2021	34		27		3	4		79.4%		27			3	1		87.1%	3
	2022	35		28	2	3	2		80.0%		26	2	3	2			78.8%	2
	2023	33		25		4	4		75.8%		21	1	6	4		1	63.6%	
前立腺	2014	65		51		7	7		78.5%		15	2	16	2			42.9%	30
	2015	96		71		15	10		74.0%		26	2	7				74.3%	61
	2016	104		67	3	17	15	2	64.4%		17	1	11		2		54.8%	73
	2017	112		75		21	14	2	67.0%		13		3		2		72.2%	94
	2018	78		46		20	10	2	59.0%		8		2				80.0%	68
	2019	91		59	1	22	6	3	64.8%		20		1		4		80.0%	66
	2020	108		66	3	26	12	1	61.1%		20	1	2		2		80.0%	83
	2021	80		47		21	11	1	58.8%		15		2				88.2%	63
	2022	104		57	2	25	18	2	54.8%		18	1	9	1			60.0%	74
	2023	112		65		28	15	4	58.0%		14		7		1		63.6%	90

原発部位	診断年	初発診断数	手術（原発巣切除）				手術治療の結果			手術なし		
			実施率	外科的治療	鏡視下の治療	内視鏡的治療	治癒切除	非治癒切除	治癒・非治癒不明			
食道	2014	32	16	50.0%	3	6	7	13	1	2	16	
	2015	22	10	45.5%	4	1	5	7	3		12	
	2016	28	18	64.3%	4	4	10	16	2		10	
	2017	30	14	46.7%	4	3	7	14			16	
	2018	32	21	65.6%	3	7	11	20	1		11	
	2019	34	14	41.2%	1	4	9	13	1		20	
	2020	28	15	53.6%			8	7	15			13
	2021	28	12	42.9%			6	6	8	4		16
	2022	24	13	54.2%			8	5	13			11
2023	38	16	42.1%	1	3	12	11	5			22	
胃	2014	166	137	82.5%	49	43	48	127	10		28	
	2015	169	122	72.2%	57	30	40	112	9	1	42	
	2016	142	113	79.6%	56	20	38	103	10		29	
	2017	162	127	78.4%	56	28	51	120	7		35	
	2018	153	122	79.7%	59	25	43	113	9		31	
	2019	138	105	76.1%	32	21	52	102	3		33	
	2020	113	79	69.9%	33	16	33	74	5		34	
	2021	98	65	66.3%	24	21	21	61	4		33	
	2022	91	71	78.0%	24	20	32	69	2		20	
2023	119	76	63.9%	22	35	25	73	3		43		
大腸（結腸＋直腸）	2014	140	127	90.7%	35	71	36	111	13	3	11	
	2015	149	133	89.3%	35	77	33	116	17		13	
	2016	149	134	89.9%	30	73	39	116	18		15	
	2017	151	136	90.1%	27	75	39	126	10		15	
	2018	165	147	89.1%	25	88	39	132	15		18	
	2019	160	140	87.5%	25	70	41	133	7		20	
	2020	164	144	87.8%	36	76	40	118	26		20	
	2021	193	167	86.5%	25	113	40	138	29		26	
	2022	142	114	80.3%	24	74	19	100	14		28	
2023	166	137	82.5%	18	96	29	125	12		29		
肝	2014	23	12	52.2%	10	2		12			11	
	2015	23	11	47.8%	11			8	3		12	
	2016	25	10	40.0%	9	1		10			15	
	2017	28	11	39.3%	9	2		11			17	
	2018	30	15	50.0%	10	5		14	1		15	
	2019	16	6	37.5%	6			5	1		10	
	2020	26	8	30.8%	7	1		8			18	
	2021	34	19	55.9%	13	6		17	2		15	
	2022	18	11	61.1%	11			8	3		7	
2023	22	10	45.5%	4	6		10			12		
膵	2014	49	24	49.0%	22	3	6	20	3	1	22	
	2015	34	9	26.5%	10			7	2		24	
	2016	39	15	38.5%	15			11	4		24	
	2017	49	14	28.6%	14			10	4		35	
	2018	50	18	36.0%	17	1		15	3		32	
	2019	48	19	39.6%	18	1		16	3		29	
	2020	44	9	20.5%	9			7	2		35	
	2021	35	8	22.9%	8			8			27	
	2022	40	9	22.5%	9			6	3		31	
2023	52	16	30.8%	16			15	1		36		

原発部位	診断年	初発診断数	放射線治療		化学療法		内分泌療法		治療法併用				
				実施率		実施率		実施率	手術 + 放射線 + 化学	手術 + 放射線	手術 + 化学	手術 + 内分泌	放射線 + 化学
食道	2014	32	11	34.4%	13	40.6%					3		9
	2015	22	9	40.9%	11	50.0%			1	1	3		6
	2016	28	11	39.3%	9	32.1%			2		1		6
	2017	30	13	43.3%	15	50.0%					3		11
	2018	32	9	28.1%	17	53.1%			1		7		8
	2019	34	14	41.2%	14	41.2%			1		1		9
	2020	28	10	35.7%	17	60.7%			2		4		7
	2021	28	9	32.1%	17	60.7%			1	1	2		7
	2022	24	2	8.3%	9	37.5%					2		2
2023	38	10	26.3%	18	47.4%			2		2		7	
胃	2014	166	3	1.8%	31	18.7%				1	20		2
	2015	169	4	2.4%	46	27.2%					27		3
	2016	142	3	2.1%	35	24.6%					25		1
	2017	162	3	1.9%	40	24.7%			1		21		2
	2018	153	5	3.3%	26	17.0%			1		13		1
	2019	138	2	1.4%	34	24.6%			1		18		1
	2020	113	1	0.9%	29	25.7%					20		1
	2021	98	4	4.1%	37	37.8%					22		1
	2022	91	4	4.4%	26	28.6%					19		2
2023	119	4	3.4%	31	26.1%					14			
大腸 (結腸 + 直腸)	2014	140	1	0.7%	55	39.3%			1		46		
	2015	149	4	2.7%	53	35.6%			2		45		2
	2016	149	7	4.7%	53	35.6%			3		41		4
	2017	151	4	2.6%	55	36.4%			1		46		2
	2018	165	7	4.2%	50	30.3%			4	1	39		1
	2019	160	7	4.4%	55	34.4%			5		38		2
	2020	164	7	4.3%	64	39.0%			3	1	51		3
	2021	193	13	6.7%	85	44.0%			7		60		5
	2022	142	8	5.6%	53	37.3%			2	1	38		2
2023	166	10	6.0%	59	35.5%			5		44			
肝	2014	23	3	13.0%	5	21.7%					1		2
	2015	23	2	8.7%	4	17.4%					2		
	2016	25	1	4.0%	2	8.0%							
	2017	28	1	3.6%	4	14.3%							
	2018	30	2	6.7%	3	10.0%							
	2019	16	2	12.5%	7	43.8%					1		1
	2020	26	5	19.2%	8	30.8%							1
	2021	34	1	2.9%	5	14.7%							
	2022	18			4	22.2%							
2023	22	3	13.6%	7	31.8%							1	
膵	2014	49	2	4.1%	30	61.2%			1		18		1
	2015	34	2	5.9%	20	58.8%					6		2
	2016	39	5	12.8%	25	64.1%					10		4
	2017	49	4	8.2%	30	61.2%			1		10		2
	2018	50	4	8.0%	30	60.0%					10		4
	2019	48	2	4.2%	33	68.8%					12		
	2020	44	3	6.8%	31	70.5%					7		3
	2021	35	1	2.9%	25	71.4%					7		1
	2022	40			22	55.0%					4		
2023	52	1	1.9%	32	61.5%					13		1	

原発部位	診断年	初発診断数	手術（原発巣切除）				手術治療の結果			手術なし	
			実施率	外科的治療	鏡視下の治療	内視鏡的治療	治癒切除	非治癒切除	治癒・非治癒不明		
肺	2014	197	94	47.7%	3	91		85	6	3	103
	2015	171	79	46.2%	1	78		75	4		92
	2016	186	99	53.2%		99		87	12		87
	2017	206	94	45.6%	5	89		86	8		112
	2018	203	100	49.3%	2	98		94	6		103
	2019	221	114	51.6%	4	110		109	5		107
	2020	187	87	46.5%	2	85		84	3		100
	2021	186	107	57.5%	1	106		97	10		79
	2022	177	84	47.5%	1	83		77	7		93
2023	196	91	46.4%	1	90		89	1	1	105	
乳房	2014	74	61	82.4%	61			60		1	13
	2015	94	81	86.2%	81			78	3		13
	2016	144	93	64.6%	93			87	6		51
	2017	137	86	62.8%	86			84	2		51
	2018	111	81	73.0%	81			78	3		30
	2019	152	91	59.9%	91			90	1		61
	2020	147	83	56.5%	83			81	2		64
	2021	149	115	77.2%	115			113	2		34
	2022	200	155	77.5%	155			149	6		45
2023	204	160	78.4%	160			153	6	1	44	
子宮頸部	2014	113	106	93.8%	104	2		104	2		7
	2015	101	91	90.1%	89	3		82	9		10
	2016	132	113	85.6%	102	11		93	20		19
	2017	108	89	82.4%	89			78	11		19
	2018	94	76	80.9%	75	1		67	9		18
	2019	81	59	72.8%	45	14		56	2	1	22
	2020	78	68	87.2%	57	13		67	1		10
	2021	82	68	82.9%	53	15		66	2		14
	2022	84	59	70.2%	42	17		55	4		25
2023	71	42	59.2%	26	16		35	5	2	29	
子宮体部	2014	28	24	85.7%	22	2		24			4
	2015	26	25	96.2%	22	3		22	1	2	1
	2016	31	28	90.3%	19	10		27	1		3
	2017	18	15	83.3%	15			14	1		3
	2018	31	28	90.3%	17	10	1	27	1		3
	2019	23	23	100.0%	10	13		23			
	2020	32	31	96.9%	13	17	1	28	3		1
	2021	34	31	91.2%	14	16	2	26	4	1	3
	2022	35	33	94.3%	19	14		31	2		2
2023	33	32	97.0%	15	17		28	4		1	
前立腺	2014	65	35	53.8%	4	29	2	29	6		30
	2015	96	35	36.5%		35		29	6		61
	2016	104	31	29.8%		31		22	9		73
	2017	112	18	16.1%	12	5	1	9	9		94
	2018	78	9	11.5%		9		8	1		69
	2019	91	25	27.5%		24	1	25			66
	2020	108	25	23.1%		21	4	24	1		83
	2021	80	17	21.3%		17		17			63
	2022	104	30	28.8%		30		21	9		74
2023	112	22	19.6%		20	2	13	9		90	

原発部位	診断年	初発診断数	放射線治療		化学療法		内分泌療法		治療法併用				
				実施率		実施率		実施率	手術 + 放射線 + 化学	手術 + 放射線	手術 + 化学	手術 + 内分泌	放射線 + 化学
肺	2014	197	51	25.9%	87	44.2%			2	1	38		27
	2015	171	47	27.5%	85	49.7%			1	2	34		28
	2016	186	29	15.6%	90	48.4%			1	3	42		14
	2017	206	20	9.7%	108	52.4%			2	1	46		8
	2018	203	31	15.3%	93	45.8%			2	1	36		13
	2019	221	28	12.7%	106	48.0%			3		34		15
	2020	187	17	9.1%	89	47.6%				1	28		11
	2021	186	30	16.1%	75	40.3%			5		31		13
	2022	177	37	20.9%	66	37.3%			1	1	21		17
2023	196	45	23.0%	85	43.4%			1	2	25		24	
乳房	2014	74	49	66.2%	22	29.7%	39	52.7%	14	33	3	5	1
	2015	94	62	66.0%	26	27.7%	57	60.6%	12	50	5	9	
	2016	144	102	70.8%	34	23.6%	73	50.7%	19	41	9	18	1
	2017	137	93	67.9%	32	23.4%	61	44.5%	12	37	15	16	2
	2018	111	50	45.0%	37	33.3%	36	32.4%	10	20	23	18	
	2019	152	102	67.1%	47	30.9%	66	43.4%	20	31	19	16	3
	2020	147	74	50.3%	52	35.4%	57	38.8%	13	13	26	19	3
	2021	149	64	43.0%	46	30.9%	83	55.7%	18	27	20	31	3
	2022	200	67	33.5%	71	35.5%	108	54.0%	20	22	38	55	5
2023	204	63	30.9%	74	36.3%	98	48.0%	13	28	49	38	1	
子宮頸部	2014	113	6	5.3%	15	13.3%				1	13		2
	2015	101	7	6.9%	14	13.9%			1		8		5
	2016	132	20	15.2%	20	15.2%			5		10		4
	2017	108	15	13.9%	22	20.4%					14		7
	2018	94	13	13.8%	11	11.7%					8		3
	2019	81	24	29.6%	13	16.0%			4	2	4		5
	2020	78	13	16.7%	13	16.7%			3	1	5		4
	2021	82	14	17.1%	14	17.1%			3		7		4
	2022	84	25	29.8%	12	14.3%			2	2	1		9
2023	71	28	39.4%	14	19.7%			1	2	1		12	
子宮体部	2014	28	1	3.6%	15	53.6%				1	14		
	2015	26			13	50.0%	1	3.8%			12	1	
	2016	31	2	6.5%	13	41.9%				1	13		
	2017	18	2	11.1%	5	27.8%			1		3		
	2018	31			9	29.0%					8		
	2019	23			10	43.5%					10		
	2020	32			7	21.9%					7		
	2021	34	1	2.9%	15	44.1%					13		1
	2022	35			15	42.9%	2	5.7%			15		
2023	33	2	6.1%	15	45.5%				1	14		1	
前立腺	2014	65	16	24.6%	3	4.6%	32	49.2%		3	2	3	
	2015	96	6	6.3%	6	6.3%	52	54.2%				6	
	2016	104	30	28.8%	5	4.8%	50	48.1%		4		4	1
	2017	112	47	42.0%	1	0.9%	47	42.0%				3	
	2018	78	38	48.7%	1	1.3%	32	41.0%					
	2019	91	35	38.5%			42	46.2%				4	
	2020	108	43	39.8%			55	50.9%		1		3	
	2021	80	29	36.3%			36	45.0%					
	2022	104	36	34.6%	4	3.8%	42	40.4%			1	1	
2023	112	43	38.4%	1	0.9%	35	31.3%				1		