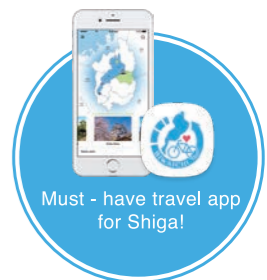


How to use the BIWAICHI Cycling Navi App

This app allows you to experience the nature of the BIWAKO (Lake Biwa) area, casually looking up tourist spots and the like.

OFFICIAL
BIWAICHI
Cycling Navi
- shiga trip -



Must - have travel app for Shiga!

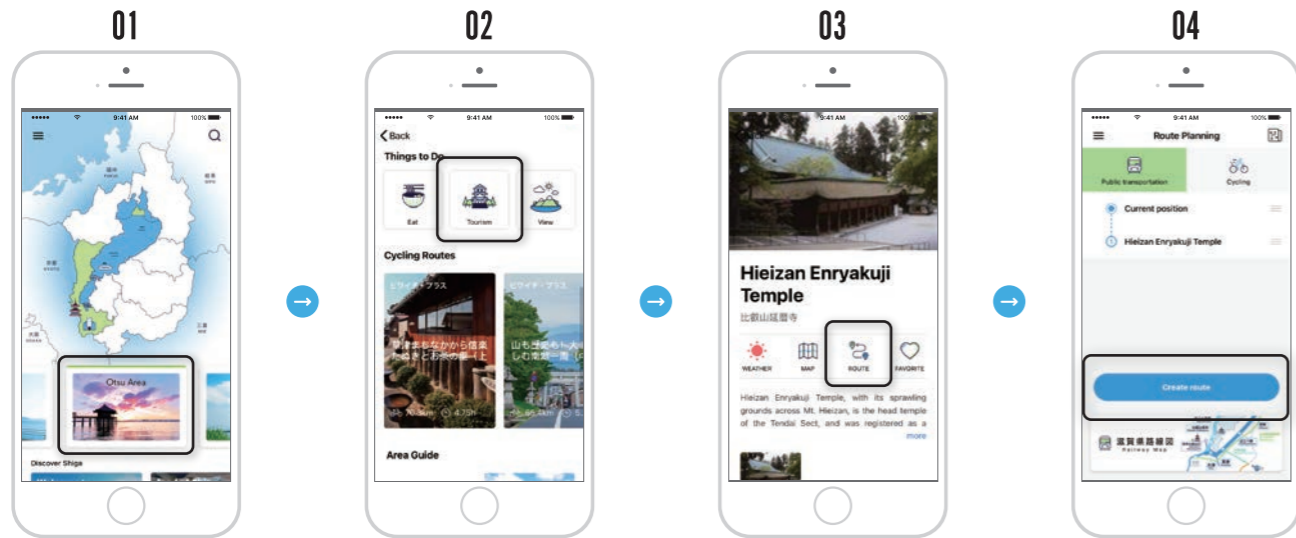
FREE

SHIGA

LAKE BIWA+ADVENTURE



Look for a place you'd like to travel to using the **spot search**.



On the "Home" page, tap an area that seems interesting.*1

Under "Things to Do," tap "Tourism."

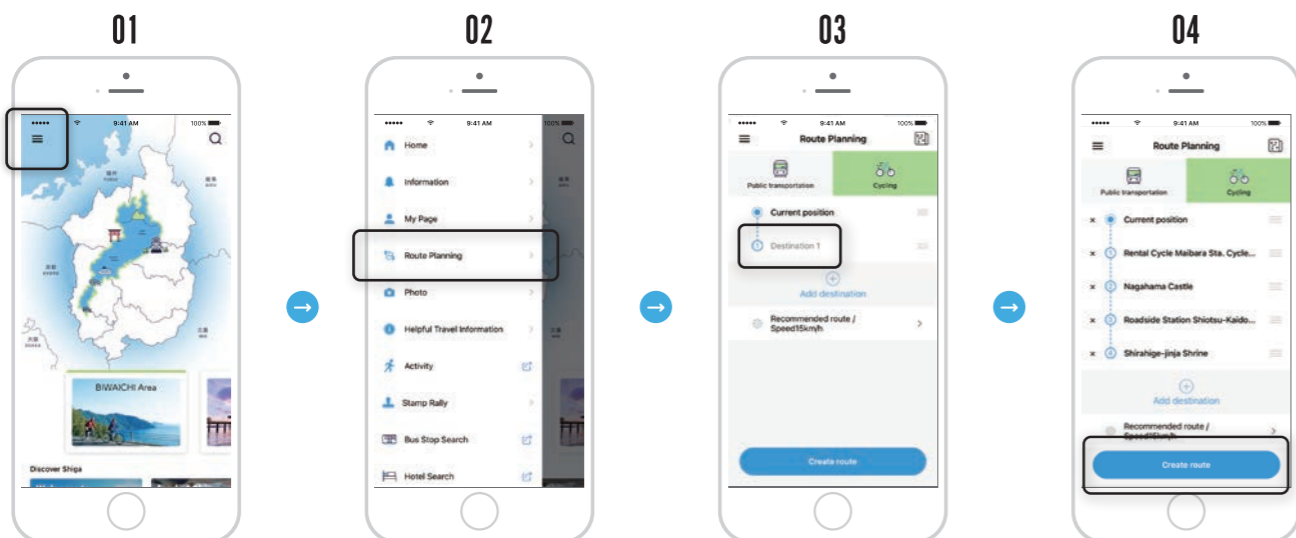
From the page for a spot you're interested in, tap "ROUTE."

Verify your starting point and destination, and create a route.

*1 Select the area you'd like to travel to, tap and 02 will display.



Create a route with the **"Route Planning"** function.



Tap the upper-left corner of the "Home" page to display the menu.

Tap "Route Planning."

Enter a spot you'd like to travel to.*2

Verify your starting point and destination, and create a route.

*2 First, tap "Destination 1," and search for a spot you'd like to travel to on the search screen. Tap on the screen for the tourist spot you searched for. In the case of "Cycling," you can tap "Add destination," and add a spot (or spots) you'd like to visit.



The largest freshwater lake in Japan

BIWAKO (Lake Biwa) is one of the world's few ancient lakes, with a history stretching back 4 million years. It boasts the largest area of any lake in Japan, and provides drinking water to 14.5 million people in areas such as Osaka and Kyoto.



The app to design a Shiga trip
just for you.



OFFICIAL
BIWAICHI
Cycling Navi
- shiga trip -

Shiga Official Travel App

Shiga+Cycle Association



BIWAICHI Cycling Navi App



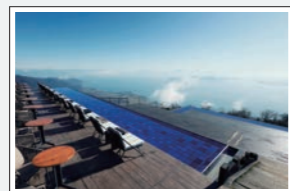
C1202103

Shiga Prefecture Recommendations - 7 Selected Tourist Spots in the Prefecture



SPOT 01
Shirahige Jinja Shrine
(Takashima City)

A spiritual spot where a torii gate towers above the water. It's particularly beautiful at dusk, and is popular as a photo spot.



SPOT 02
THE BIWAKO TERRACE
(Otsu City)

The expansive view of BIWAKO (Lake Biwa) as seen from the terrace, which has been built on high ground, is gorgeous.



SPOT 03
LAKE BIWA MUSEUM
(Kusatsu City)

A museum that focuses on the theme of "lakes and people," allowing visitors to experience and learn about all aspects of BIWAKO (Lake Biwa), which supports the lives of animals and people.



SPOT 04
MIHO MUSEUM
(Koka City)

A museum in the mountains designed by world-famous architect I.M. Pei. Many rare works of art are exhibited here.



SPOT 05
Hachiman-bori Canal
(Omihachiman City)

The townscape is charming, with elegant buildings lined along the canal. In addition to strolling along the canal, boat rides are also fun.



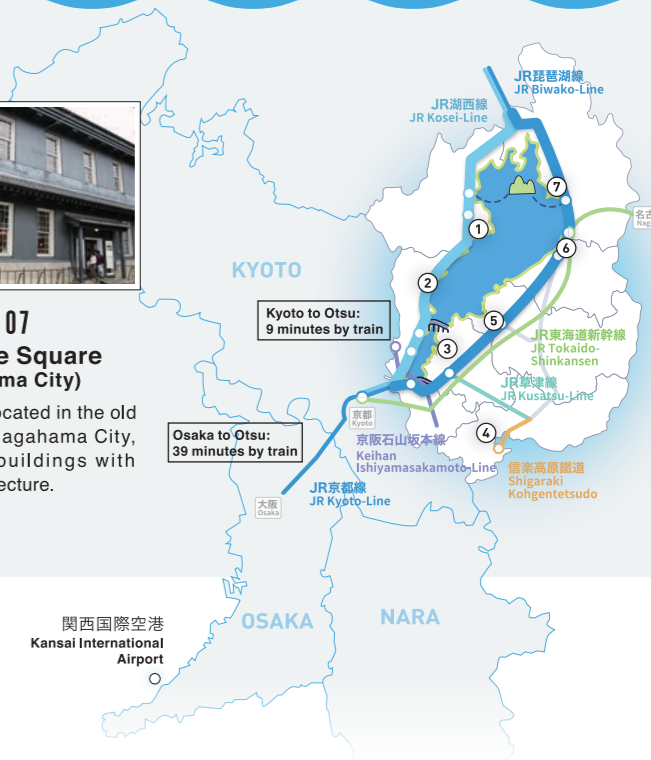
SPOT 06
Hikone-jo-Castle
(Hikone City)

One of the five remaining tenshu (tower keeps) with National Treasure status. BIWAKO (Lake Biwa) as seen from the top floor is outstanding.



SPOT 07
Kurokabe Square
(Nagahama City)

A tourist spot, located in the old city center of Nagahama City, that features buildings with traditional architecture.



A must for tourism in Shiga Prefecture /

Use the official app to check these **4** points to enjoy your trip in Shiga Prefecture.

point 01 Planning

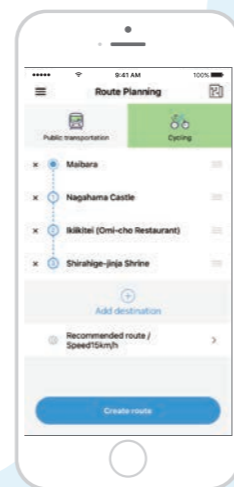
Recommended tourist spots are listed in the app. You can find business hours, addresses, and the weather conditions for those spots. Get more enjoyment out of the nature, culture, and cuisine in Shiga Prefecture.

PLAN 1 Refresh yourself by cycling.

Rental Cycle Maibara Sta. Cycle Station → Nagahama Castle → Local cuisine → Shirahige Jinja Shrine

PLAN 2 Take a tour of the cultural heritage sites of Shiga Prefecture.

Kansai International Airport → Hachiman-bori Canal → Local cuisine → Hikone Castle



point 03 Useful information

- Need a place to eat or rest?
- Finding a tourist information?
- Get a Wi-Fi connection?

At times like these, you can find nearby spots quickly. The app supports searches by various categories, such as local cuisine, tourist information spots, support stations, parking, cafes, restrooms, and the like.

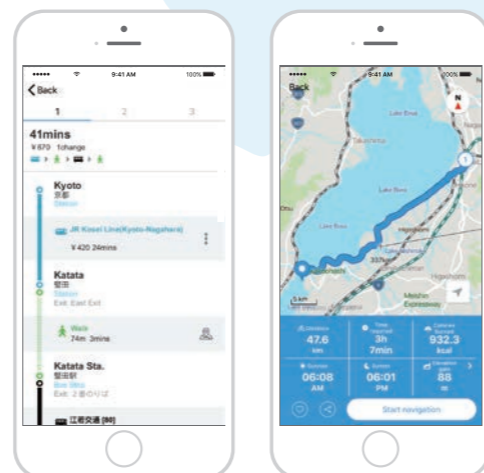
- Local cuisine**
This category provides information on recommended restaurants, including local specialties.
- Tourist Information**
This category allows you to check information about tourist information spots with foreign language support.
- Wi-Fi**
This category allows you to check information about spots with free Wi-Fi.

point 02 Navigation

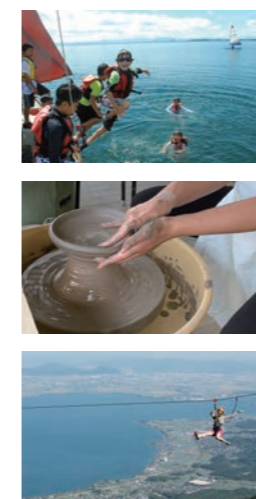
With one tap of a button, navigate along the optimal routes to tourist spots that spark your interest. You can select public transportation routes, or cycling routes, including trains, buses, or walking. Further, you can verify information such as the required travel time and the costs to get to each spot, as well as walking routes, on the map.

Public transportation

Cycling



point 04 Get more enjoyment out of Shiga



Activity

Shiga Prefecture has activities that allow you to get in touch with lakes and bountiful nature, fun chances to take part in harvesting, opportunities to create traditional crafts, and much more. Using the reservation site, you can check available activities in the prefecture, make reservations, and actively enjoy Shiga more deeply.



Travel Guide

With its nature, history, culture, cuisine, and more, Shiga Prefecture has lots of attractions. Each area has fascinating characteristics, from culture that developed around BIWAKO (Lake Biwa) to spots with dazzling views, locations enveloped by lush nature, atmospheric temples, and more. In our Travel Guide articles, we introduce highlights Shiga Prefecture has carefully chosen for each area.