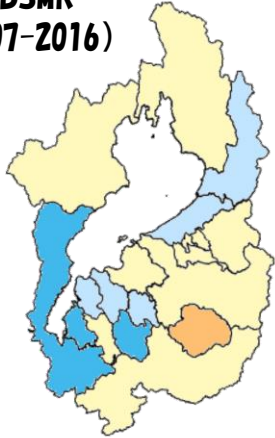
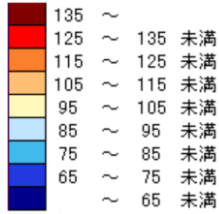
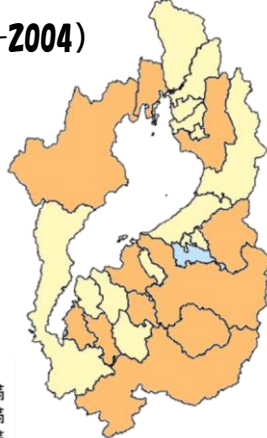


図1-25-1 肺炎（男性）

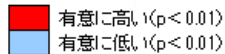
EBSMR (2007-2016)



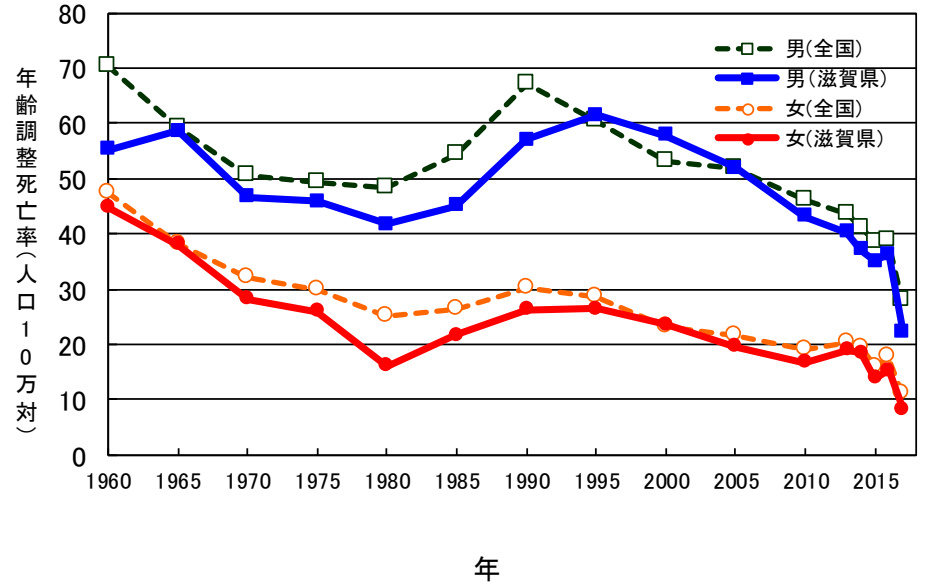
(1995-2004)



X²検定 (2007-2016) 全国と比較



年齢調整死亡率



EBSMR (2007-2016)

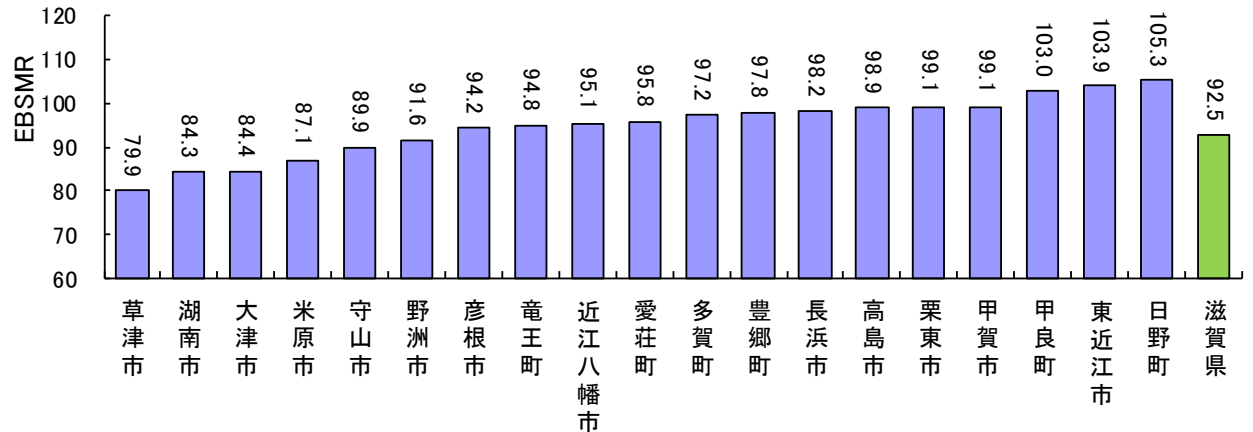
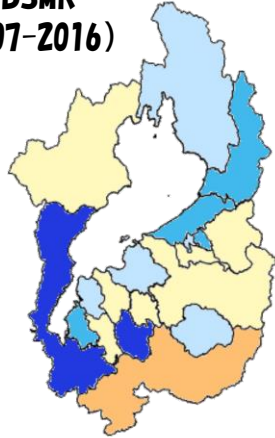
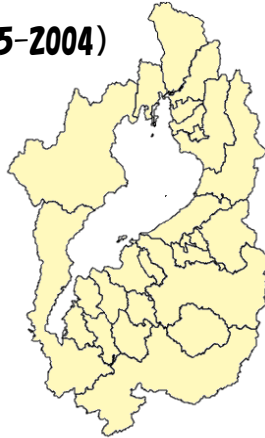


図1-25-2 肺炎（女性）

**EBSMR
(2007-2016)**

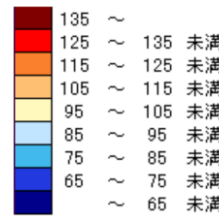


(1995-2004)



肺炎の県のSMRIは、男性92.5、女性87.1で、男女ともに全国より有意に低い。

(※SMR:標準化死亡比〈全国=100〉)



55

**X²検定 (2007-2016)
全国と比較**



有意に高い (p < 0.01)
有意に低い (p < 0.01)

**EBSMR
(2007-2016)**

