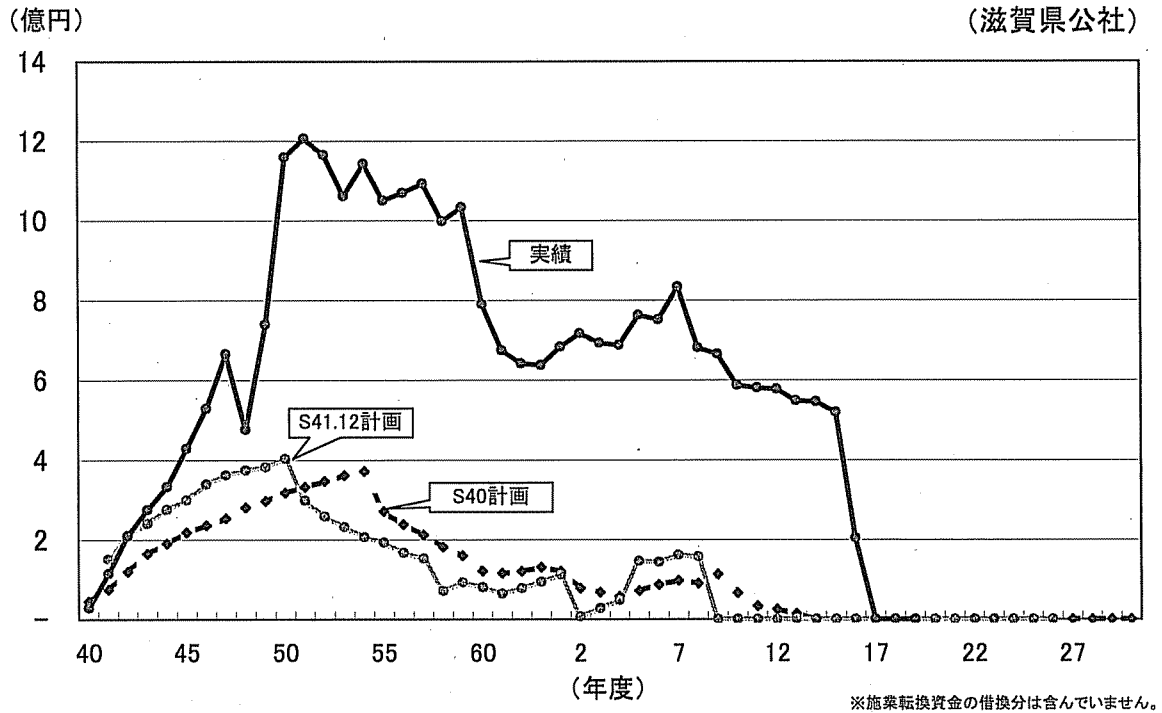
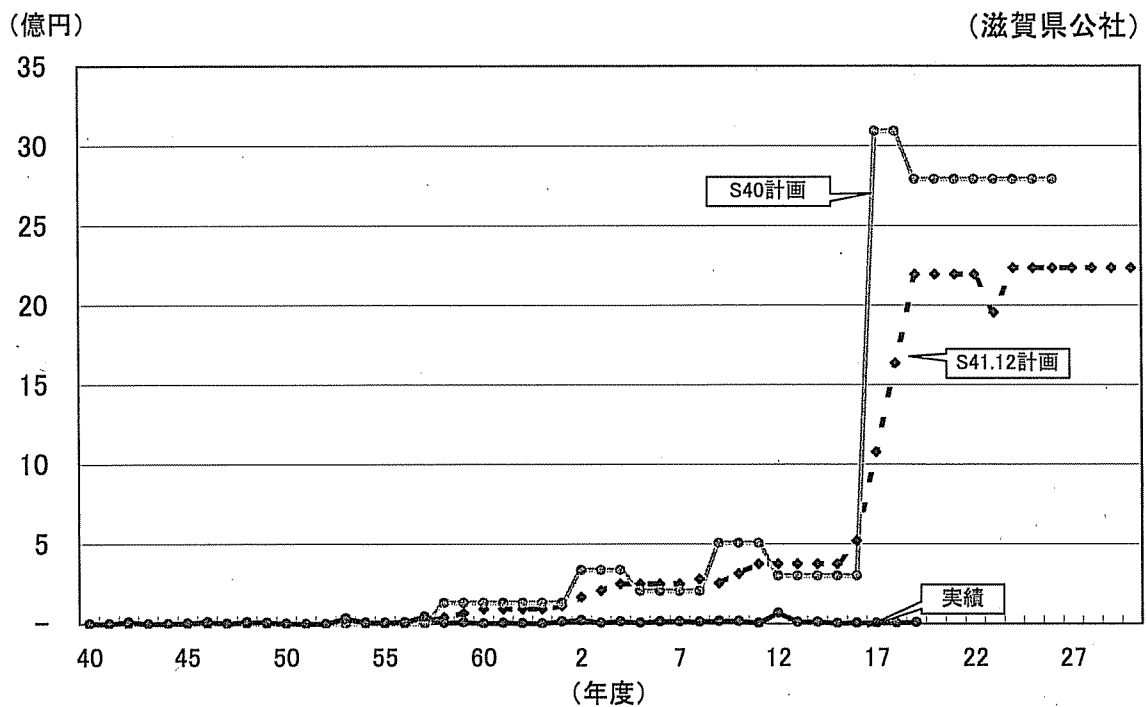


滋賀県造林公社設立構想と実績の比較

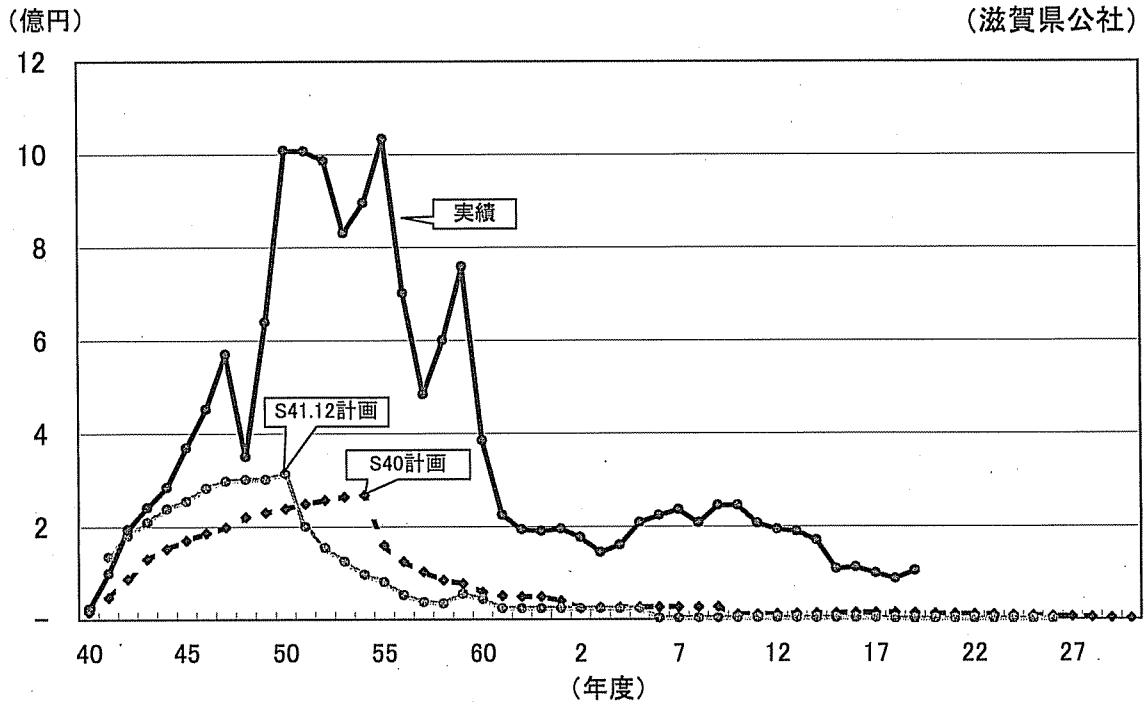
(1) 借入金の推移



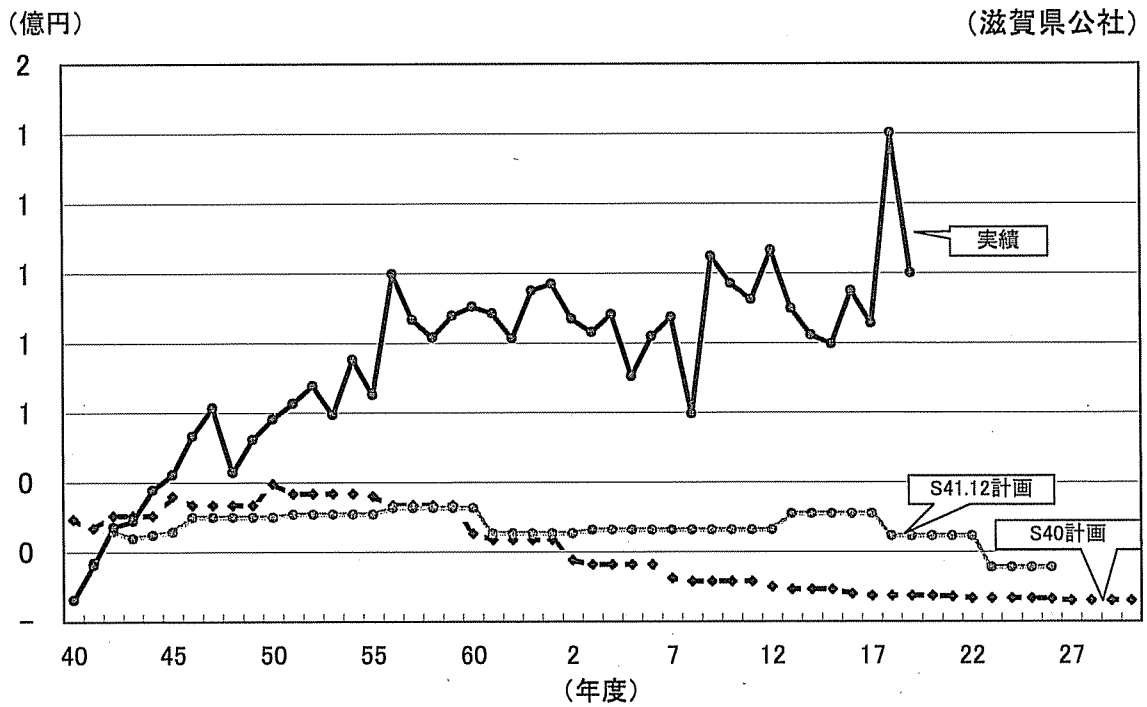
(2) 伐採収入(分収林事業収入)の推移



(3) 事業費の推移

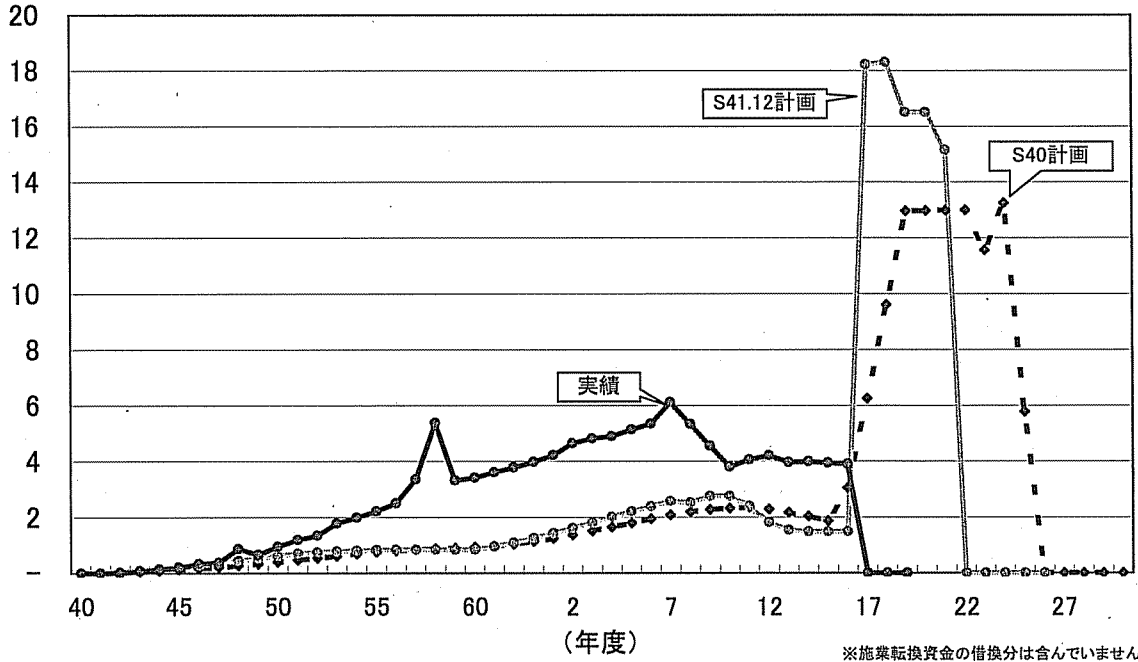


(4) 管理費の推移



(5) 償還金の推移

(億円) (滋賀県公社)



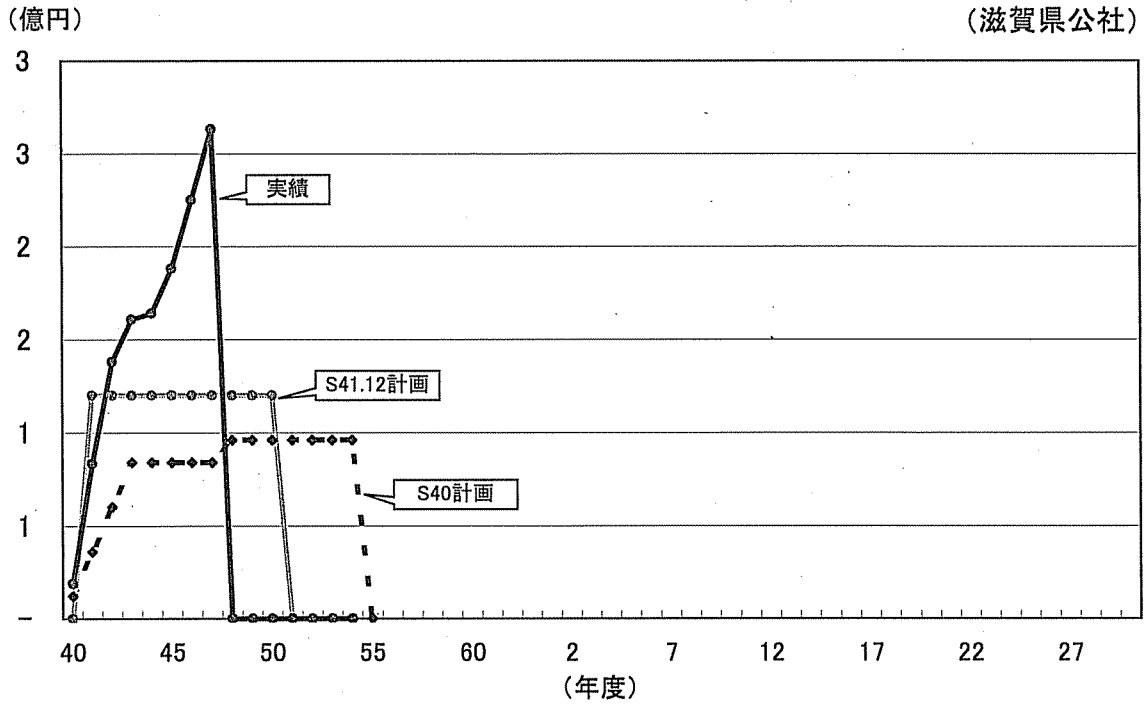
滋賀県造林公社設立構想における事業費と実績の比較

(単位:百万円)

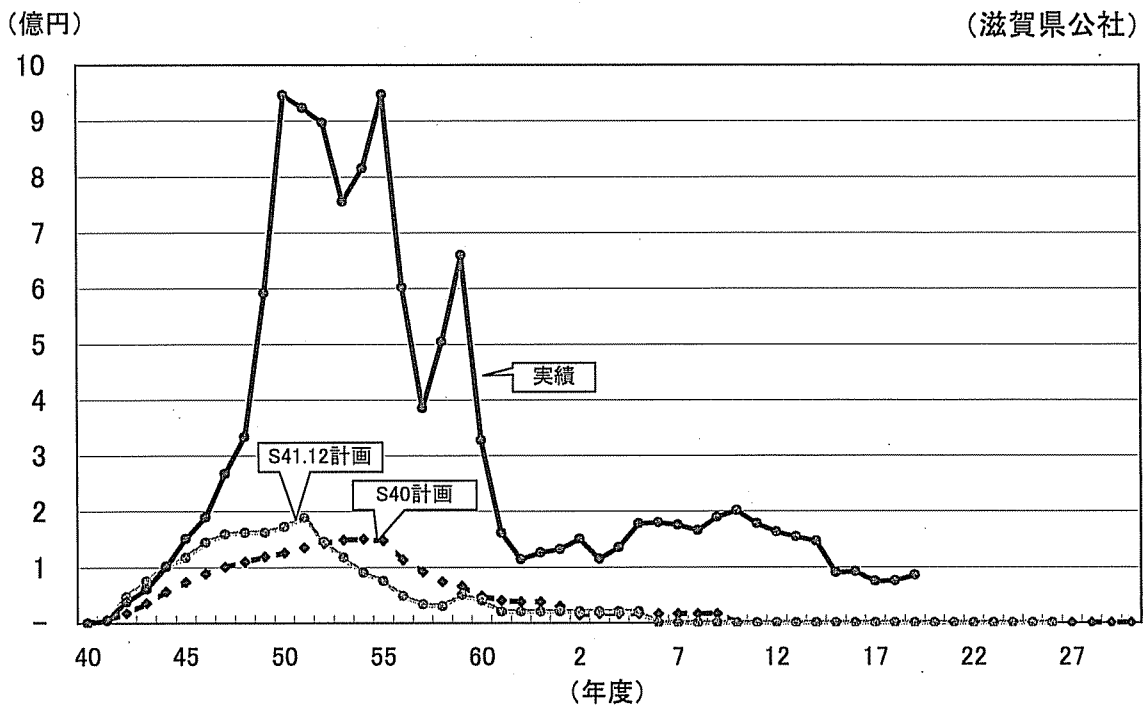
年度		造林事業費								
		植栽			保育			附帯事業		
		S40	S41.12	実績	S40	S41.12	実績	S40	S41.12	実績
40	1965	12	-	19	0	-	0	3	-	2
41	1966	36	120	83	6	4	5	6	11	7
42	1967	60	120	138	18	47	38	9	13	13
43	1968	84	120	161	35	75	61	11	15	13
44	1969	84	120	164	57	102	101	12	16	11
45	1970	84	120	188	73	117	151	13	17	21
46	1971	84	120	225	89	144	189	13	18	24
47	1972	84	120	263	100	159	267	14	19	23
48	1973	96	120	-	110	162	333	14	19	8
49	1974	96	120	-	119	162	591	15	19	19
50	1975	96	120	-	126	172	946	17	21	33
51	1976	96	-	-	135	188	923	18	11	58
52	1977	96	-	-	142	145	897	18	9	66
53	1978	96	-	-	149	117	756	19	8	53
54	1979	96	-	-	150	90	815	21	7	55
55	1980	-	-	-	147	75	947	13	6	61
56	1981	-	-	-	113	48	602	11	4	60
57	1982	-	-	-	92	33	385	11	4	59
58	1983	-	-	-	74	30	504	11	4	59
59	1984	-	-	-	66	50	660	11	5	52
60	1985	-	-	-	48	40	328	10	3	43
61	1986	-	-	-	40	20	161	11	4	44
62	1987	-	-	-	38	20	114	11	4	63
63	1988	-	-	-	38	20	126	11	4	49
元	1989	-	-	-	30	20	132	10	4	47
2	1990	-	-	-	14	20	150	9	4	11
3	1991	-	-	-	16	20	115	9	4	13
4	1992	-	-	-	16	20	136	10	4	10
5	1993	-	-	-	16	20	178	10	4	16
6	1994	-	-	-	16	-	180	10	3	28
7	1995	-	-	-	16	-	175	10	3	40
8	1996	-	-	-	16	-	166	10	3	26
9	1997	-	-	-	16	-	189	11	3	33
10	1998	-	-	-	-	-	201	10	3	25
11	1999	-	-	-	-	-	178	11	3	8
12	2000	-	-	-	-	-	163	11	3	12
13	2001	-	-	-	-	-	155	12	3	5
14	2002	-	-	-	-	-	147	12	3	8
15	2003	-	-	-	-	-	90	13	3	5
16	2004	-	-	-	-	-	92	14	3	8
17	2005	-	-	-	-	-	74	14	3	11
18	2006	-	-	-	-	-	75	13	1	6
19	2007	-	-	-	-	-	86	13	1	10
20	2008	-	-	-	-	-	-	12	1	-
21	2009	-	-	-	-	-	-	11	1	-
22	2010	-	-	-	-	-	-	10	1	-
23	2011	-	-	-	-	-	-	9	0	-
24	2012	-	-	-	-	-	-	8	0	-
25	2013	-	-	-	-	-	-	7	0	-
26	2014	-	-	-	-	-	-	7	0	-
27	2015	-	-	-	-	-	-	5	-	-
28	2016	-	-	-	-	-	-	4	-	-
29	2017	-	-	-	-	-	-	3	-	-
30	2018	-	-	-	-	-	-	1	-	-
合計		1,200	1,200	1,241	2,120	2,120	12,582	596	297	1,220

滋賀県造林公社設立構想における事業費と実績の比較

(1) 新植の推移



(2) 保育費の推移



(3) 附帯事業費の推移

(億円)

(滋賀県公社)

