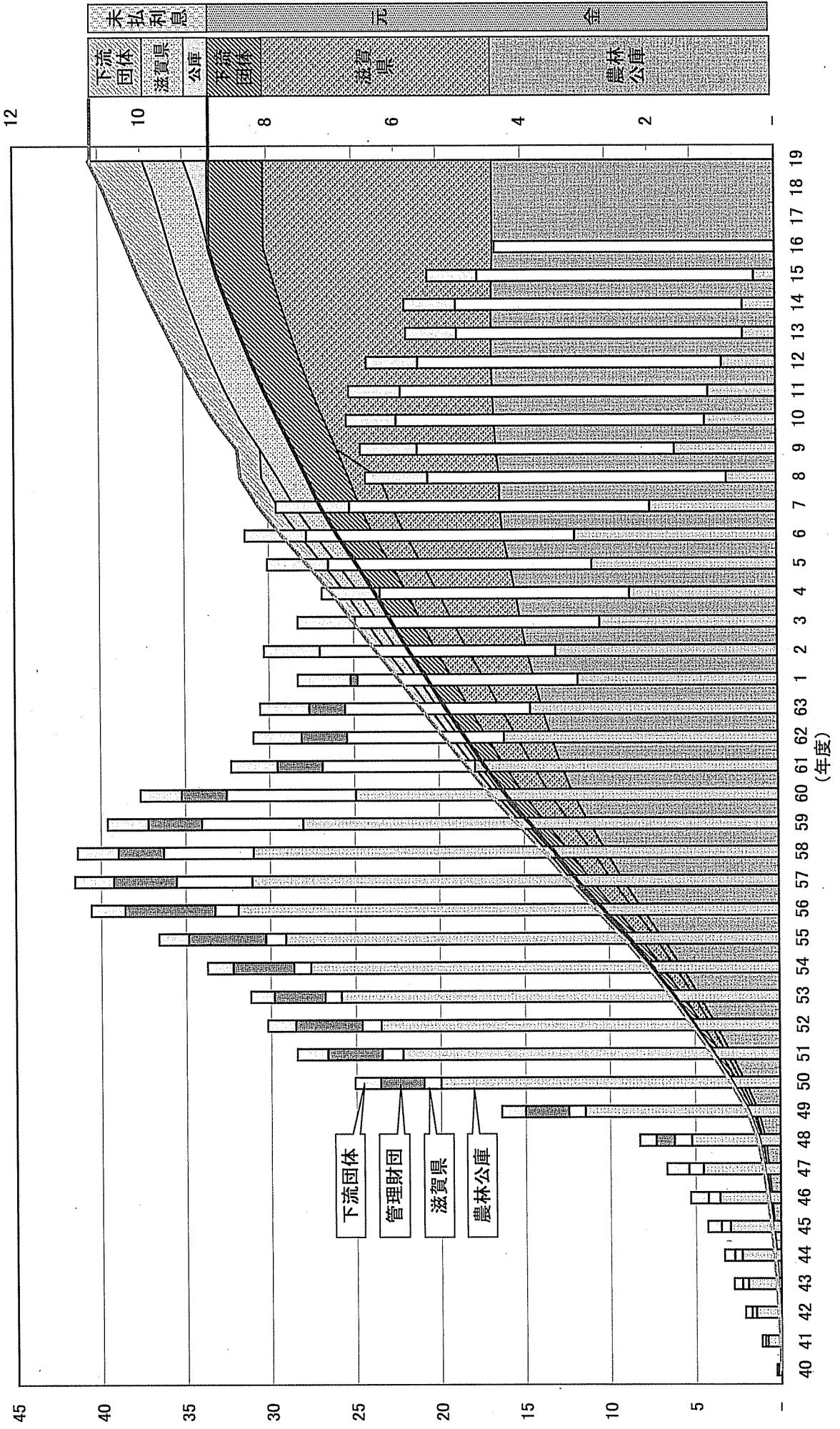


借入金と債務残高の推移 (2造林公社合計)

債務残高
(百億円)

借入額
(億円)



40 41 42 43 44 45 46 47 48 49 50 51 52 53 54 55 56 57 58 59 60 61 62 63 1 2 3 4 5 6 7 8 9 10 11 12 13 14 15 16 17 18 19
(年度)