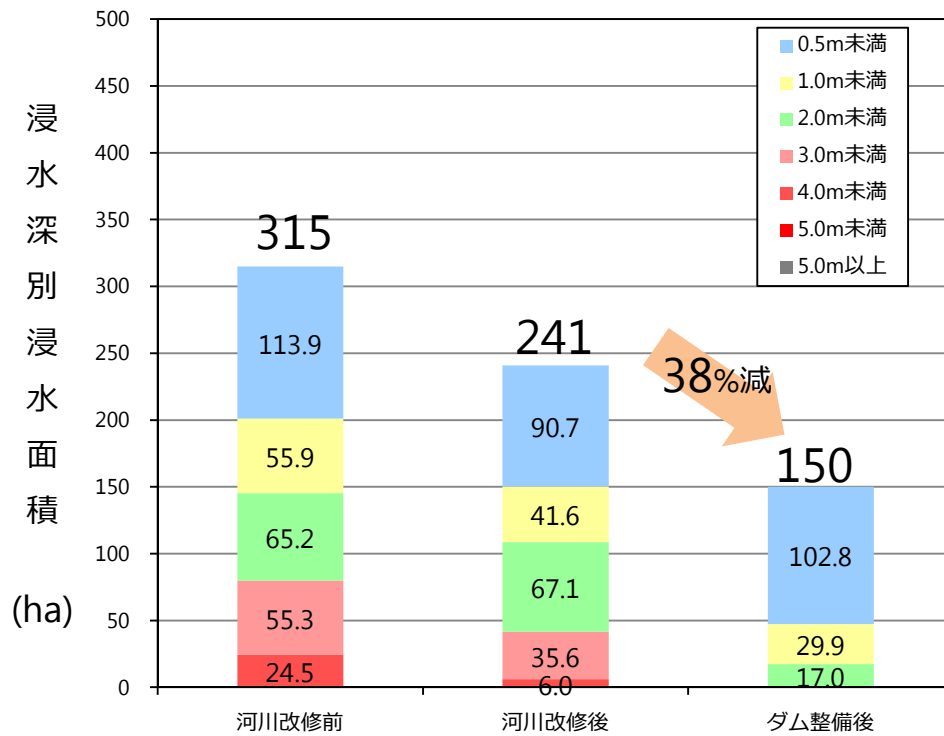


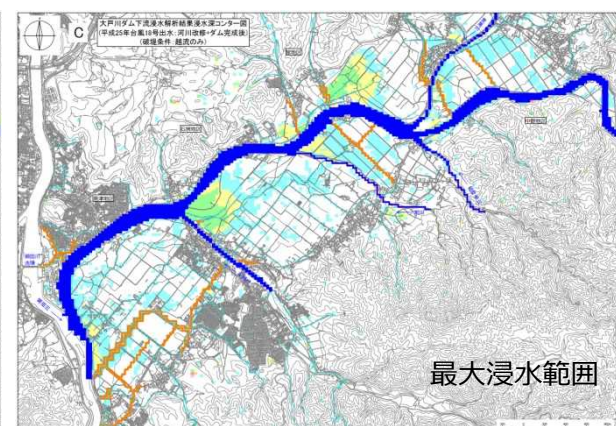
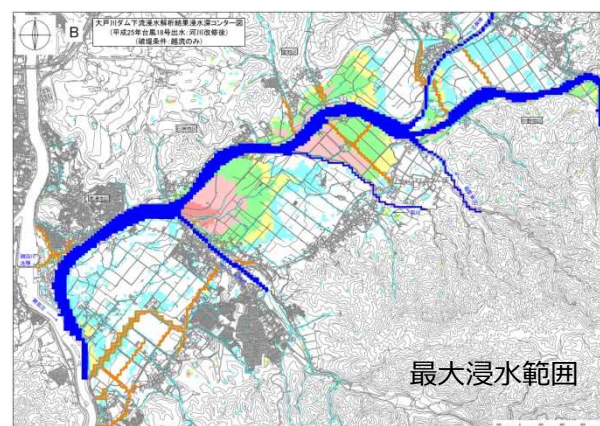
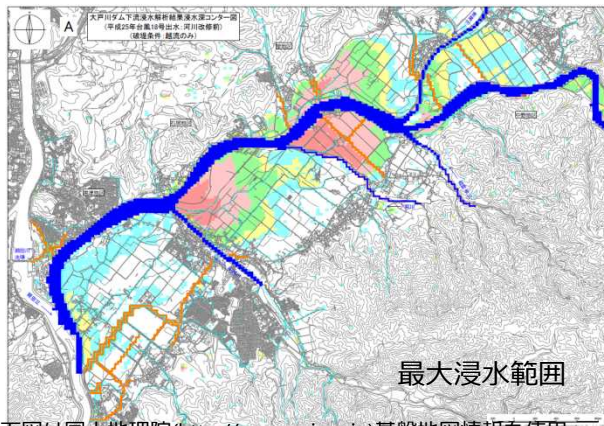
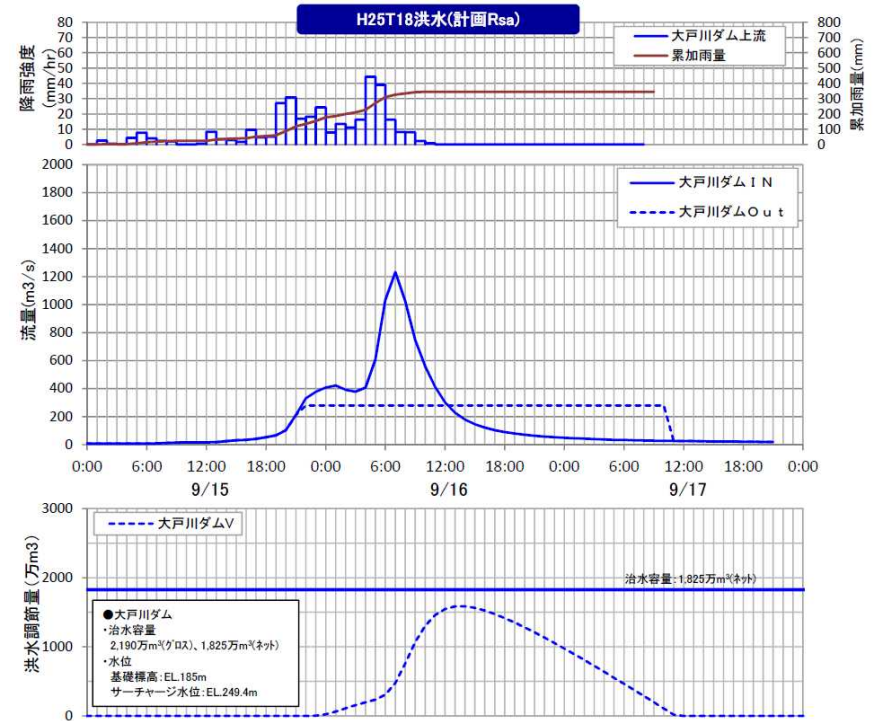
氾濫解析結果 ①平成25年 台風18号【無破堤】



河川改修前

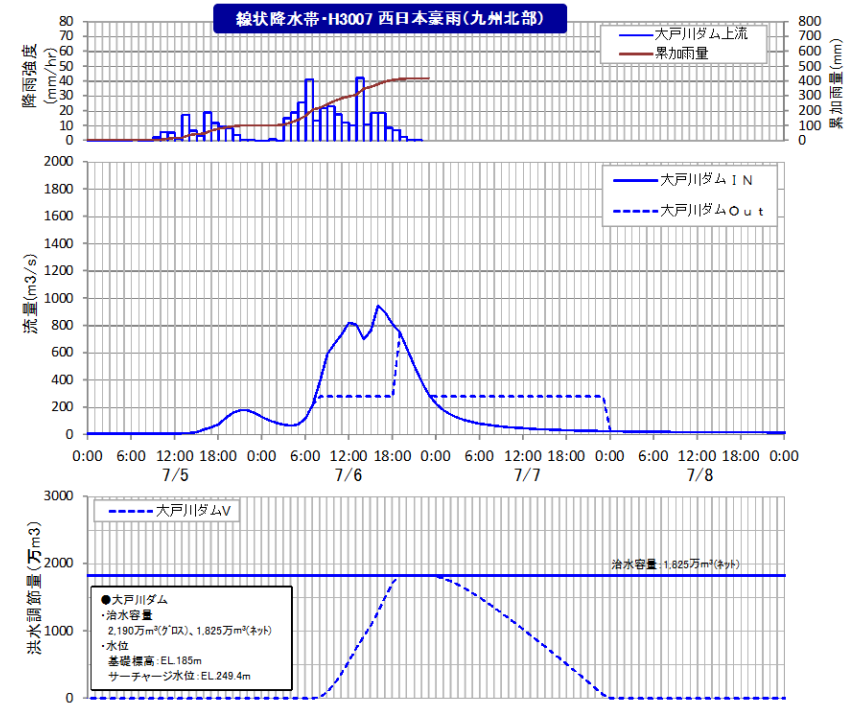
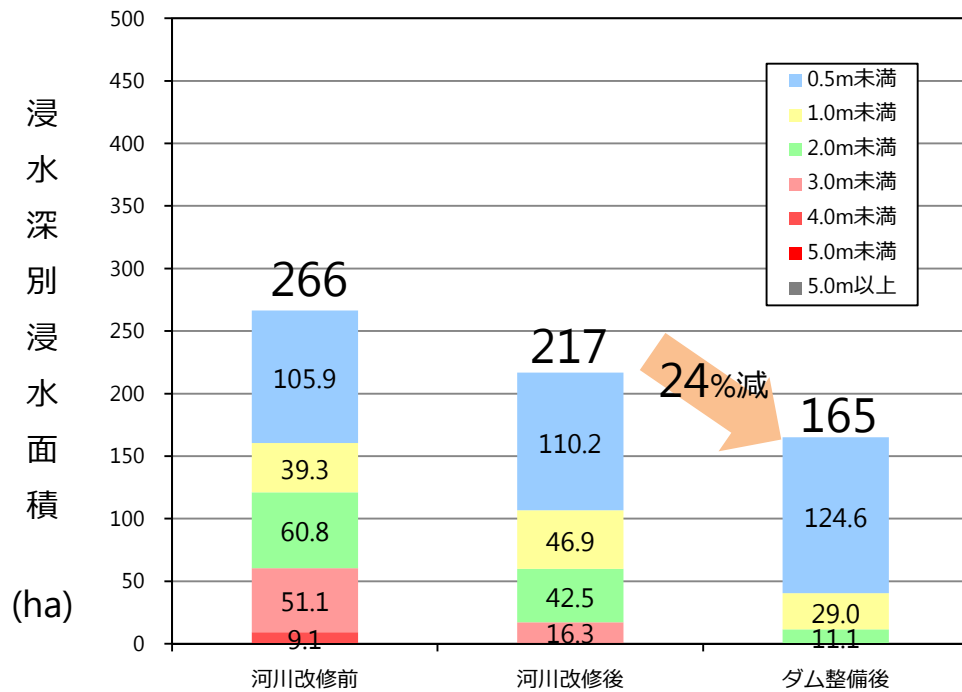
河川改修後

河川改修+ダム整備後

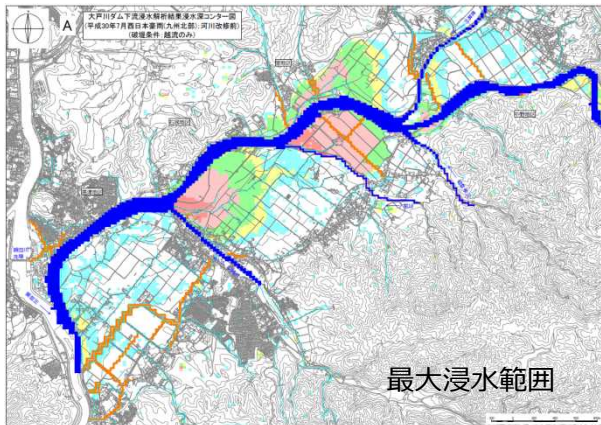


下図は国土地理院(<http://www.gsi.go.jp>)基盤地図情報を使用

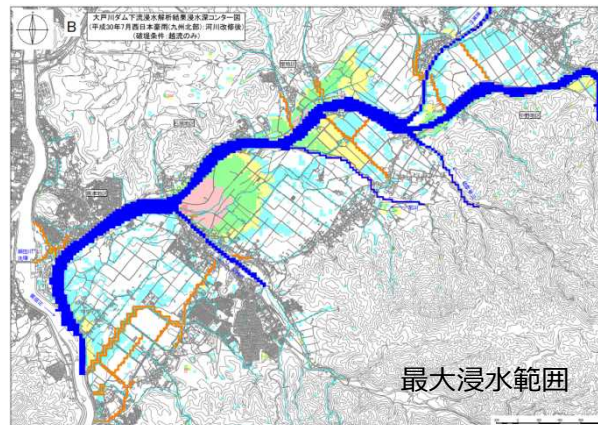
氾濫解析結果 ②平成30年 西日本豪雨【無破堤】



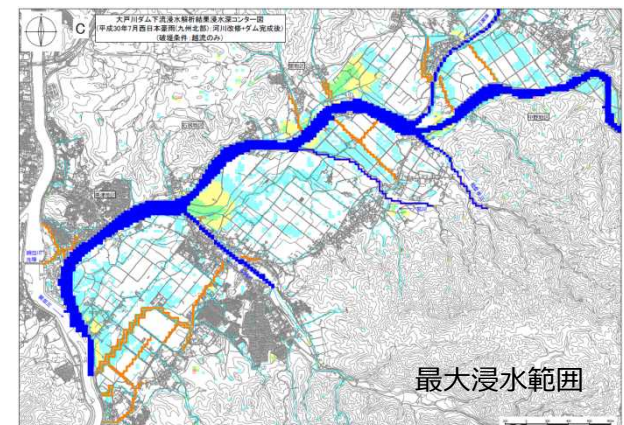
河川改修前



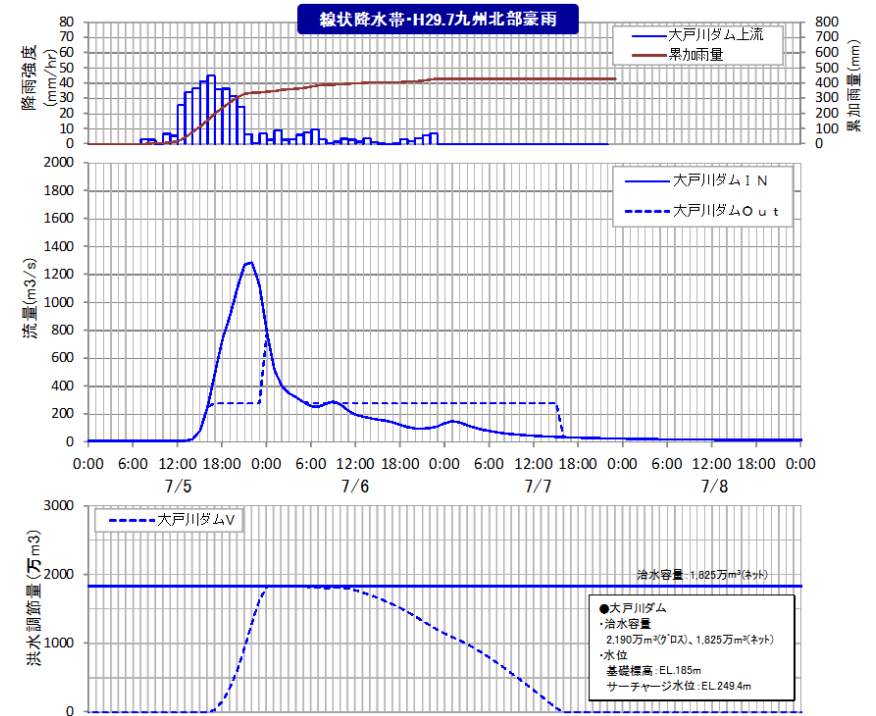
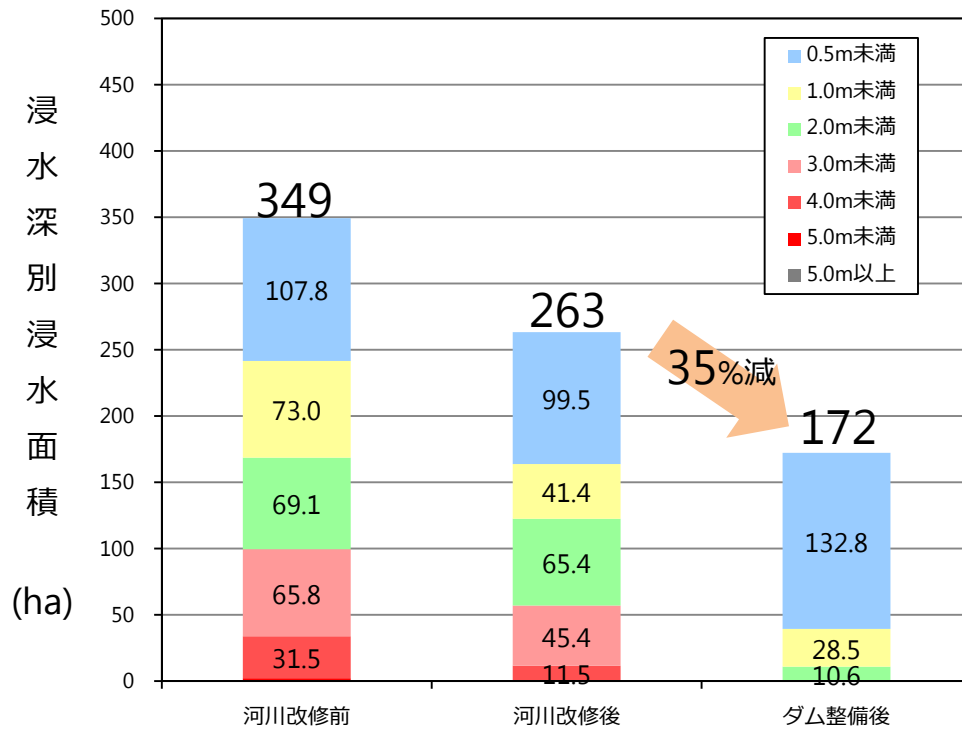
河川改修後



河川改修+ダム整備後



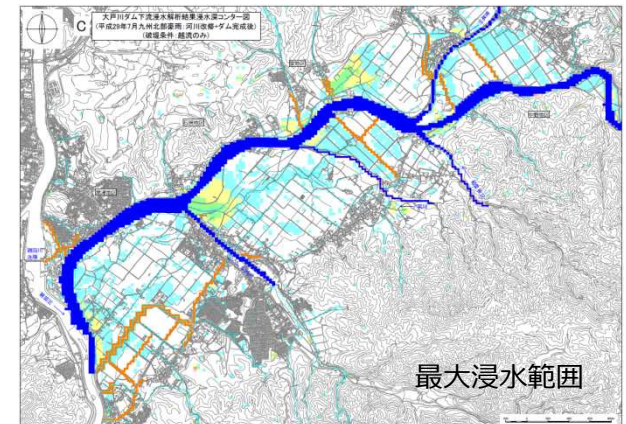
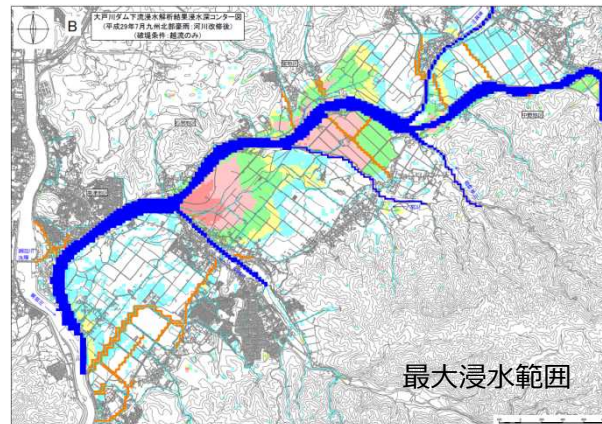
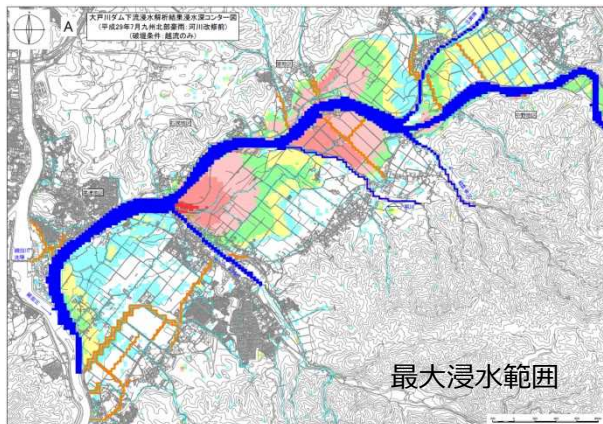
氾濫解析結果 ③平成29年 九州北部豪雨【無破堤】



河川改修前

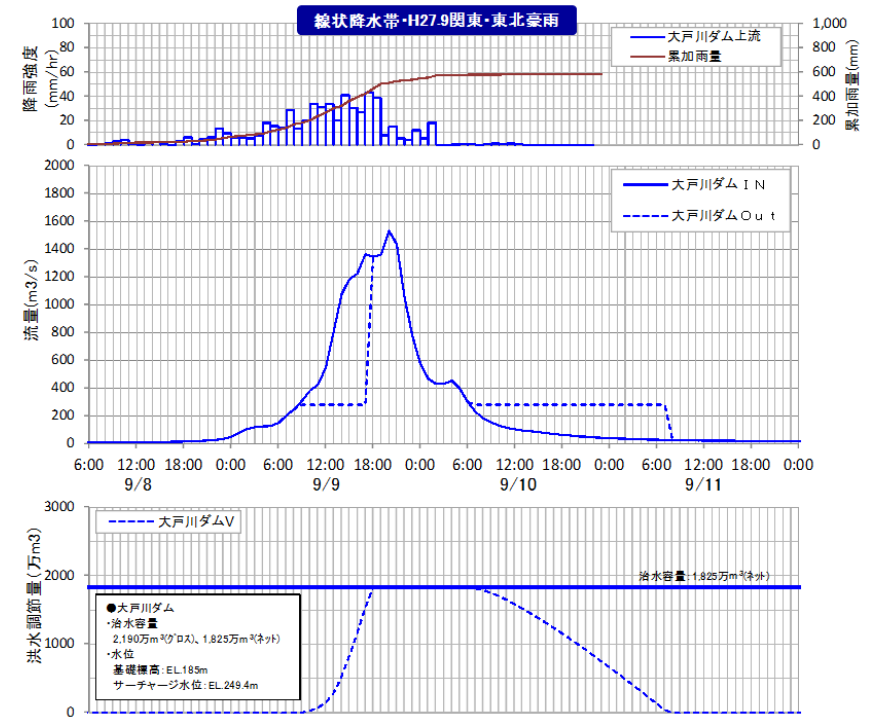
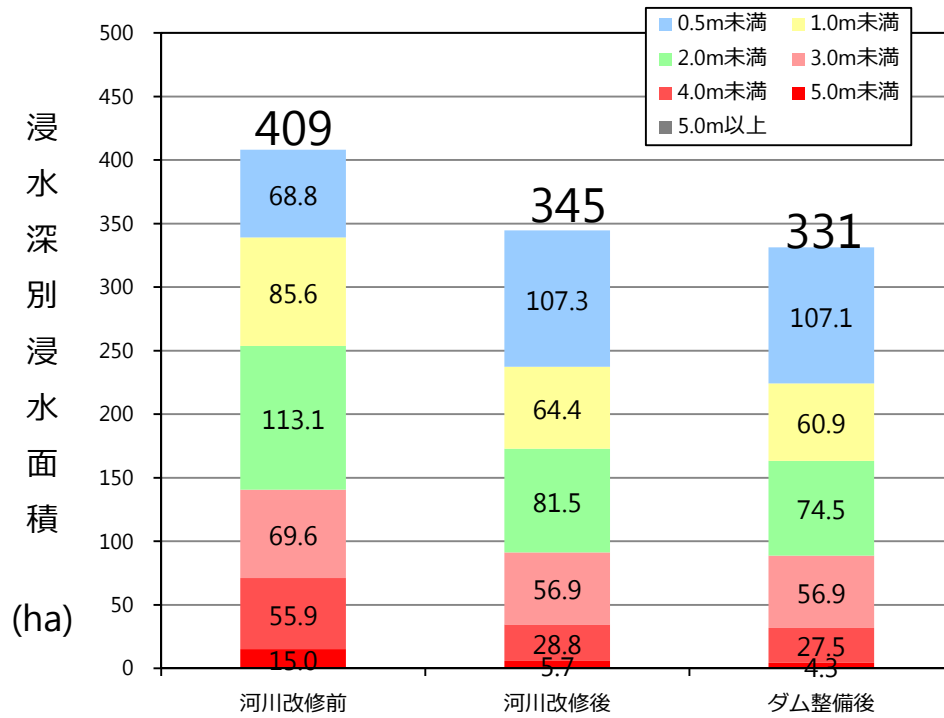
河川改修後

河川改修+ダム整備後

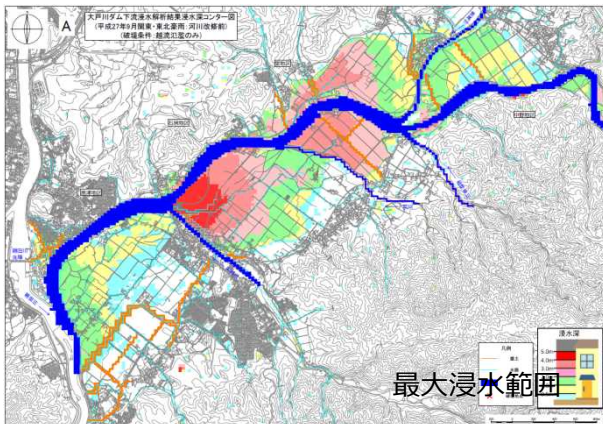


下図は国土地理院(<http://www.gsi.go.jp>)基盤地図情報を使用

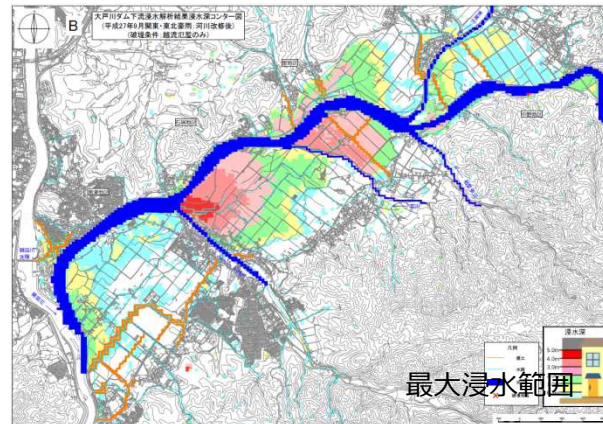
氾濫解析結果 ④平成27年 関東・東北豪雨【無破堤】



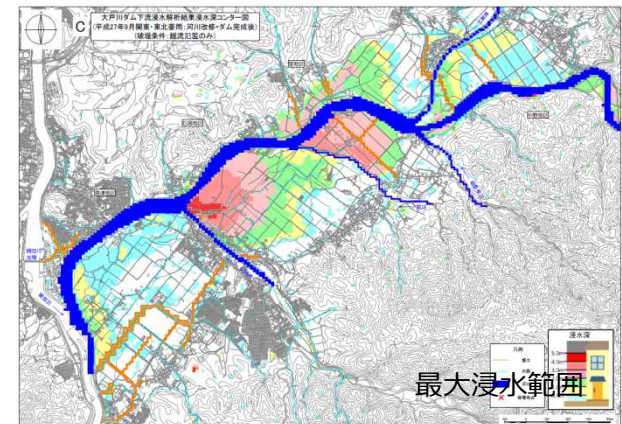
河川改修前



河川改修後



河川改修+ダム完成後



下図は国土地理院(<http://www.gsi.go.jp>)基盤地図情報を使用